

EQUIPMENT

FOR SALE / RENT
24/7 EMERGENCY SERVICE

BOILERS
 20,000 - 400,000 #/Hr.

DIESEL & TURBINE GENERATORS
 50 - 25,000 KW

GEARS & TURBINES
 25 - 4000 HP

WE STOCK LARGE INVENTORIES OF:

*Air Pre-Heaters • Economizers
 Deaerators • Pumps • Motors
 Fuel Oil Heating & Pump Sets
 Valves • Tubes • Controls
 Compressors • Pulverizers
 Rental Boilers & Generators*

WWW.WABASHPOWER.COM
 800-704-2002

wabash Power Equipment Co.
 444 Carpenter Avenue Wheeling, IL 60090

www.aiche.org/cep or Circle No. 201 on p.63

Help Support the AIChE Foundation


Your donation helps enhance programs in these areas:

- AIChE Annual Fund
- BioCatalyst Fund
- Energy Initiative
- Leadership Challenge
- Minority Programs
- Student Programs
- Water Initiative
- Women's Initiatives

To donate or for program information go to:
www.aiche.org/community/giving

AIChE

FOR SALE - PILOT SCALE RESEARCH VACUUM DRYER



Unique research grade vacuum dryer capable of drying both solid feeds (powder and discrete pieces) and pumpable fluids. Diagram below shows three and single belt configurations for solid and fluid feeds respectively.

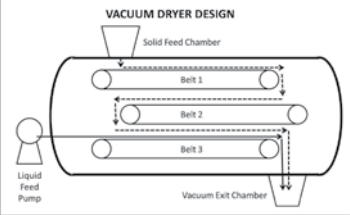
Manufacturer: Bucher Drytech

Delivered to Pepsi: 2011

Evaporation Capacity (depending on incoming moisture and properties):
 1-6 kg per hour (fluid feed)
 2-4 kg per hour (solid feed)

Vacuum Capability: < 5mbar

Heating Zones: Four



VACUUM DRYER DESIGN

Solid Feed Chamber

Belt 1

Belt 2

Belt 3

Liquid Feed Pump

Vacuum Exit Chamber

For more detailed information contact: Ted Farrington,
 Sr. Director, PepsiCo Corporate Research - Plano, TX

Phone: 972-334-4067
e-mail: ted.farrington@pepsico.com

www.aiche.org/cep or Circle No. 202 on p.63

BOILERS
 Available Immediately!



lease • rental • sale

(3) New 250,000 PPH 750 PSI / 750 Deg. S.H. with Low NOx Burners

(2) New 250,000 PPH 850 PSI / 750 Deg. S.H. with Low NOx Burners

250,000-850 PSI / 750 Deg. F.	TRAILER MOUNTED
250,000-750 PSI / 750 Deg. F.	72K-350 PSI
180,000-750 PSI / 750 Deg. F.	70K-350 PSI
165,000-1025 PSI / 850 Deg. F.	70K-350 PSI
165,000-350 PSI	45K-750 PSI
150,000-750 PSI / 750 Deg. F.	40K-350 PSI
135,000-750 PSI / 750 Deg. F.	36K-300 PSI
120,000-350 PSI	30K-300 PSI
120,000-725 PSI / 750 Deg. F.	24K-300 PSI
70,000-350 PSI	
60,000-750 PSI / 750 Deg. F.	
50,000-350 PSI	
40,000-750 PSI	
40,000-350 PSI	
30,000-350 PSI	
20,000-1600 PSI	
10-1,000 HP / 15-250 PSI	

EMERGENCY SERVICE 24HR EMERGENCY SERVICE

INDECK
 INDECK POWER EQUIPMENT COMPANY
 tel 847.541.8300 / 800.446.3325
 fax 847.541.9984
info@indeck-power.com
www.indeck.com

www.aiche.org/cep or Circle No. 203 on p.63

Looking To Advertise?

To be included in CEP Marketplace or CEP Showcase Contact:

Doris B. Deutsch,
 Global Display Sales Manager
 (Company names starting A-L)
 646-495-1361 • dorid@aiiche.org

or

Ian P. Sergio
 Global Display Sales Manager
 (Company names starting M-Z)
 646-495-1339 • iansp@aiiche.org

HEAT EXCHANGERS

◀ Liquid Cooled

Air Cooled ▶

FOR GASES & LIQUIDS!

Talk Directly with Design Engineers!
Blower Cooling Vent Condensing

XCHANGER
INDUSTRIAL HEAT EXCHANGERS

(952) 933-2559 info@xchanger.com

www.aiche.org/cep or Circle No. 204 on p.63

CONSULTING

CRYSTALLIZATION & PRECIPITATION

Dr. Wayne J. Genck Genck International
3 Somonauk Court, Park Forest, IL 60466
Tel (708) 748-7200 Fax (708) 748-7208
genckintl@aol.com — http://www.genckintl.com

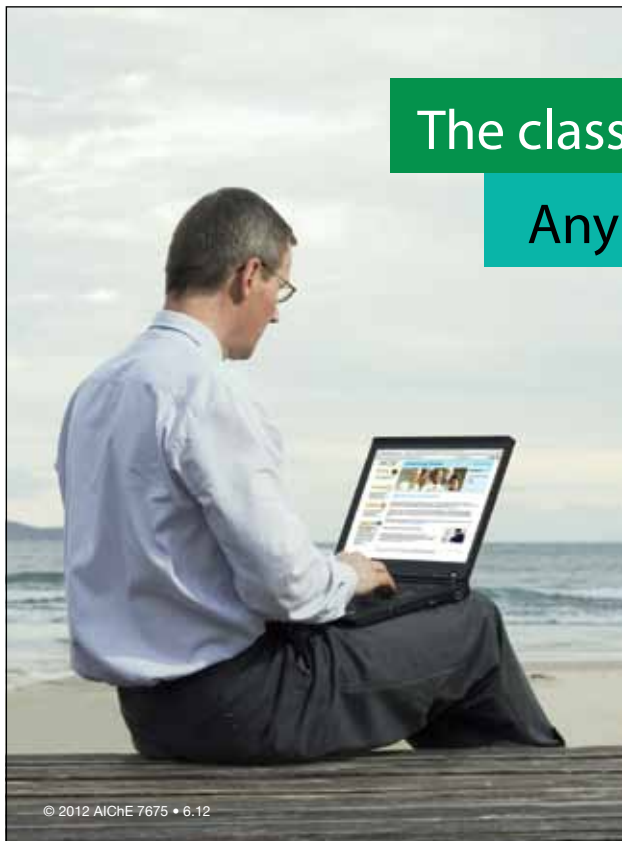
- Design/Scale-up
- Size Distribution
- Laboratory Investigations
- Filtration
- Troubleshooting
- Purity
- Caking
- Drying
- Particle Habit
- Product Micro-Analysis
- Polymorphism
- Kinetics Studies

◆◆◆ Industrial Seminars ◆◆◆

www.aiche.org/cep or Circle No. 205 on p.63

The classes you need.

Any time and place you want.



© 2012 AIChE 7675 • 6.12

Add the skills you need with self-paced online courses in the AIChE eLearning Center.

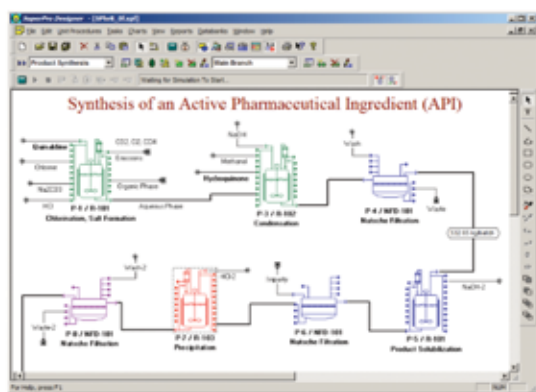
- CCPS' Process Safety Management Overview
- Spreadsheet Problem Solving for Chemical Engineers
- Distillation in Practice
- Chemical Engineering for Non-ChemEs
- And 16 more.

www.aiche.org/elearning

Intelligen Suite®

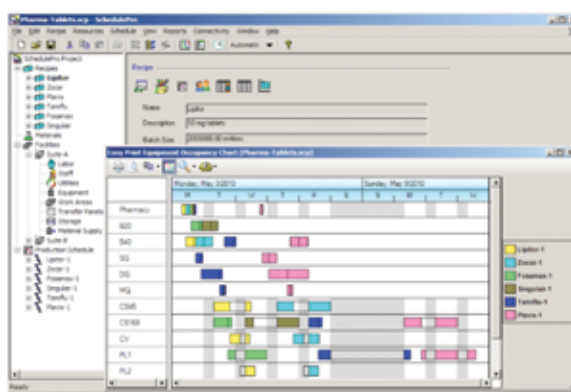
The Market-Leading Engineering Suite for Modeling, Evaluation, Scheduling, and Debottlenecking of Multi-Product Facilities

SuperPro®

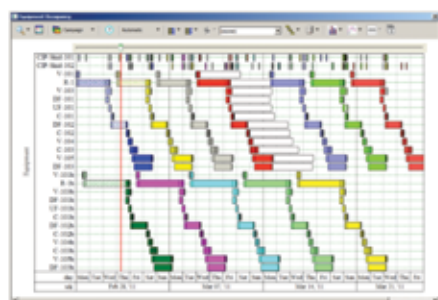


Use SuperPro Designer to model, evaluate, and optimize batch and continuous processes

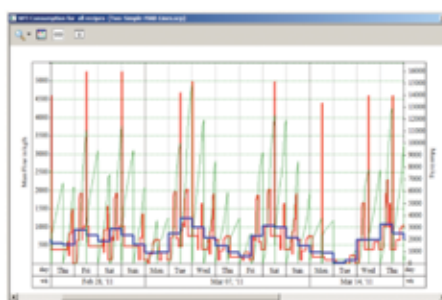
SchedulePro®



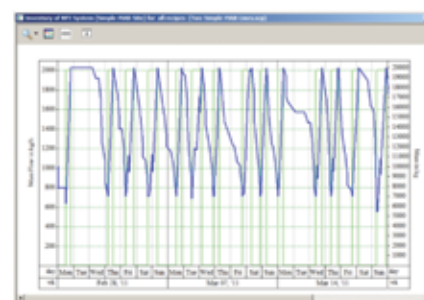
Migrate to SchedulePro to model, schedule, and debottleneck multi-product facilities



Easy production tracking, conflict resolution and rescheduling



Tracking demand for resources (e.g., labor, materials, utilities, etc.)



Managing inventories for input, intermediate, and output materials

SuperPro Designer is a comprehensive process simulator that facilitates modeling, cost analysis, debottlenecking, cycle time reduction, and environmental impact assessment of integrated biochemical, bio-fuel, fine chemical, pharmaceutical (bulk & fine), food, consumer product, mineral processing, water purification, wastewater treatment, and related processes. Its development was initiated at the Massachusetts Institute of Technology (MIT). SuperPro is already in use at more than 500 companies and 900 universities around the globe (including 18 of the top 20 pharmaceutical companies and 9 of the top 10 biopharmaceutical companies).

SchedulePro is a versatile production planning, scheduling, and resource management tool. It generates feasible production schedules for multi-product facilities that do not violate constraints related to the limited availability of equipment, labor, utilities, and inventories of materials. It can be used in conjunction with SuperPro (by importing its recipes) or independently (by creating recipes directly in SchedulePro). Any industry that manufactures multiple products by sharing production lines and resources can benefit from the use of SchedulePro. Engineering companies use it as a modeling tool to size shared utilities, determine equipment requirements, reduce cycle times, and debottleneck facilities.

Visit our website to download detailed product literature and functional evaluation versions of our tools

INTELLIGEN, INC. • 2326 Morse Avenue • Scotch Plains, NJ 07076 • USA

Tel: (908) 654-0088 • Fax: (908) 654-3866

Email: info@intelligen.com • Website: www.intelligen.com

Intelligen also has offices in Europe and representatives in countries around the world