

FOR SALE / RENT
24/7 EMERGENCY SERVICE

BOILERS
20,000 - 400,000 #/Hr.

DIESEL & TURBINE GENERATORS
50 - 25,000 KW

GEARS & TURBINES
25 - 4000 HP

WE STOCK LARGE INVENTORIES OF:
 Air Pre-Heaters • Economizers
 Deaerators • Pumps • Motors
 Fuel Oil Heating & Pump Sets
 Valves • Tubes • Controls
 Compressors • Pulverizers
 Rental Boilers & Generators

WWW.WABASHPOWER.COM
800-704-2002

wabash Power Equipment Co.
 444 Carpenter Avenue Wheeling, IL 60090

www.aiche.org/cep or Circle No. 200

HEAT EXCHANGERS



FOR **GASES & LIQUIDS!**

Talk Directly with Design Engineers!
 Blower Cooling Vent Condensing

Xchanger

(952) 933-2559 Fax: (952) 933-5647
www.xchanger.com info@xchanger.com

www.aiche.org/cep or Circle No. 201

Software

www.ae-sim.com
Process Simulators

Material Balance - Process Control
 Power Plant Steam Cycles
 Free Demo Downloads

www.aiche.org/cep or Circle No. 202

Sussman
 ELECTRIC BOILERS

- Stainless Steel Electric Boilers
- Steam Super Heaters
- Hot Water Boilers
- Electric Steam Boilers

800-238-3535
LIC NY www.sussmanboilers.com

www.aiche.org/cep or Circle No. 203

EVAPORATORS, CRYSTALLIZERS, SPRAY DRYERS
 ETHANOL, BIODIESEL, DISTILLATION, SOLVENT RECOVERY

ALAQUA, INC
 201-758-1577, FAX: 201-758-1522
 Alaqu@Mindspring.com
<http://www.alaquainc.com/>

www.aiche.org/cep or Circle No. 204

EQUIPMENT FOR SALE

16 TON C-FRAME MULTIPRESS NEW IN '96
 300 GALLON BP MDL JUMM-2 W/OIL HEATER
 300 GALLON BP MDL NMM VACUUM MIXER
 AARON 1 GAL. SS SIGMA BLADE LAB MIXER
 BAKER-PERKINS LAB DOUGH MIXER, UNUSED
 DAY 550 GAL DAYMAX 100 HP SS DISPERSER
 BONNOT 4" EXTRUDER LINE W/CONVEYORS
 ABBE 256 SS CU. FT. DBL CONE MIXER
 250 GAL PROCESS EQUIP. SANITARY TANK
 250 GAL PROCESS EQUIP. SANITARY TANK ON WHEELS
 250 GAL PRECISION INSULATED SS SANITARY TANK
 WITH 3/4 HP LIGHTIN AGITATOR, UNUSED
 GRUENBERG LAB VACUUM TRAY DRYER, 650 DEG.

WEB SITE MOHAWKMACHINERY.COM

MOHAWK MACHINERY
 CINCINNATI OH
 513-771-1952
 CALL JIM MUELLER'S CELL PHONE 513-608-7902

www.aiche.org/cep or Circle No. 205

BOILERS
Available Immediately!



lease • rental • sale

(3) New 250,000 PPH 750 PSI / 750 Deg. S.H. with Low NOx Burners
 (2) New 250,000 PPH 850 PSI / 750 Deg. S.H. with Low NOx Burners


250,000-850 PSI / 750 Deg. F.	TRAILER MOUNTED
250,000-750 PSI / 750 Deg. F.	72K-350 PSI
180,000-750 PSI / 750 Deg. F.	70K-350 PSI
165,000-1025 PSI / 850 Deg. F.	70K-350 PSI
165,000-350 PSI	45K-750 PSI
150,000-750 PSI / 750 Deg. F.	40K-350 PSI
135,000-750 PSI / 750 Deg. F.	36K-300 PSI
120,000-350 PSI	30K-300 PSI
120,000-725 PSI / 750 Deg. F.	24K-300 PSI
70,000-350 PSI	
60,000-750 PSI / 750 Deg. F.	
50,000-350 PSI	
40,000-750 PSI	
40,000-350 PSI	
30,000-350 PSI	
20,000-1600 PSI	
10-1,000 HP / 15-250 PSI	

EMERGENCY SERVICE 24HR EMERGENCY SERVICE

INDECK
 INDECK POWER EQUIPMENT COMPANY
 tel 847.541.8300 / 800.446.3325
 fax 847.541.9984
info@indeck-power.com
www.indeck.com

www.aiche.org/cep or Circle No. 206

Consulting



CRYSTALLIZATION & PRECIPITATION

Dr. Wayne J. Genck Genck International
 3 Somonauk Court, Park Forest, IL 60466
 Tel (708) 748-7200 Fax (708) 748-7208
genckintl@aol.com — <http://www.genckintl.com>

• Design/Scale-up	• Troubleshooting	• Particle Habit
• Size Distribution	• Purity	• Product Micro-Analysis
• Laboratory Investigations	• Caking	• Polymorphism
• Filtration	• Drying	• Kinetics Studies

◆◆◆ Industrial Seminars ◆◆◆

www.aiche.org/cep or Circle No. 207



MACHINERY & EQUIPMENT Co. Inc.
Quality Used Equipment!

We have over 5,000 pieces of used processing and packaging machinery available. A large portion of this equipment was used in the Chemical and Pharmaceutical Industries.

Please visit our website to view detailed descriptions and photos at:
www.machineryandequipment.com

P.O. Box 7632 San Francisco, CA 94120 Toll Free: (800) 227-4544
Fax: (415) 467-2639 Phone: (415) 467-3400
Email: info@machineryandequipment.com

www.aiche.org/cep or Circle No. 208



**Looking
to Advertise?**

Contact Doris Deutsch at
dorid@aiche.org

PROCESS FILTRATION EQUIPMENT

JWI Filter presses with polypro recessed plates
Sparkler & Niagara horizontal plate filters,
Model 33D17, 18S23, 1824S & 3348S
Stainless Steel ERTEL & STAR Filter presses
Nutsche filter, 10 gal, 316 SS, 35 psi
K-S Avery 35 cu. ft. membrane filter press, polypro plates
US Autojet, Pressure leaf, 400 sq. ft., stainless steel

AVERY FILTER COMPANY
(201) 666-9664 Fax (201) 666-3802
E-mail: larry@averyfilter.com
www.averyfilter.com

www.aiche.org/cep or Circle No. 209

Training



The Praxair Hydrogen Technical Orientation Program (HyTOP) consists of 9 months of training in a structured curriculum that is designed to give a broad exposure to all aspects of Hydrogen plant operations. The HyTOP program is a mentored program, with each participant assigned a sponsor, within the assigned facility. The HyTOP candidate will have immediate engineering and operational responsibilities and the development of the candidate is anchored in "on the job training". The HyTOP program is specifically designed for individuals who desire to use an engineering degree to leverage a management career in operations or engineering.

HyTOP engineers will be expected to become actively involved in many aspects of the plant activities and support daily operations. These activities include plant startups or shutdowns, maintenance, project planning and execution, training, problem solving, safety program execution, customer interface, operations technicians interface, efficiency monitoring, production scheduling/planning. Specific activities that will be performed by the engineer are related to the day-to-day operation of the plant and include the following:

- assessing the efficiency and operating capability of plant equipment specifically as it relates to energy consumption and recommending operational changes based on that assessment
- troubleshooting plant process and equipment problems and implementing solutions
- utilizing control systems and high level advanced controls technology to optimize plant performance
- interfacing with facility technicians in the areas of safety, plant operations and maintenance
- providing technical expertise for operations and maintenance technicians
- executing various aspects of the Praxair Safety Program including training, documentation, inspections and correction of deficiencies
- monitoring plant costs for alignment with budgets and targets for improvement
- executing projects in the plant in accordance to budgets, standards and facility operating schedules
- assisting in the diagnosis and resolution of operational reliability issues

The permanent assignment location after training will be at the training facility or within that general geographical area.

Current HyTOP training facilities are: Geismar, LA, Houston, TX, Charleston, Bell or Institute, WV, Whiting, IN/Chicago, IL.

Hiring will begin on July 1, 2008 with employment start dates based on candidate availability.

Some travel is required to various sites throughout North America in order to complete assignments, participate in project activities or for training.

Requirements - To participate in the training program, the HyTOP Engineer must have a BS or MS in Chemical or Mechanical Engineering with 1-3 years of industrial experience. Electrical Engineers with 1-3 years of power generation or power distribution experience will be considered.

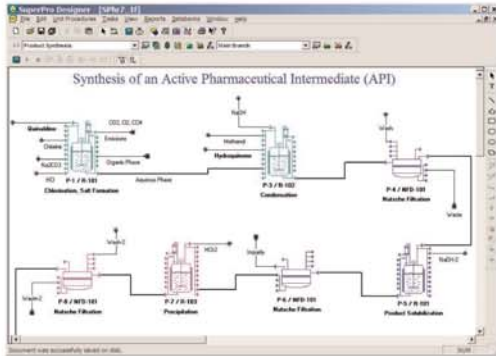
We offer an excellent salary & benefit package. **To apply, visit our web site at www.praxair.com, click on Careers, Career Opportunities & Search for Professional. Click on the job title from the complete Job List or search by job number 0701995.** EOE, m/f/d/v.

www.aiche.org/cep or Circle No. 210

Intelligen Suite

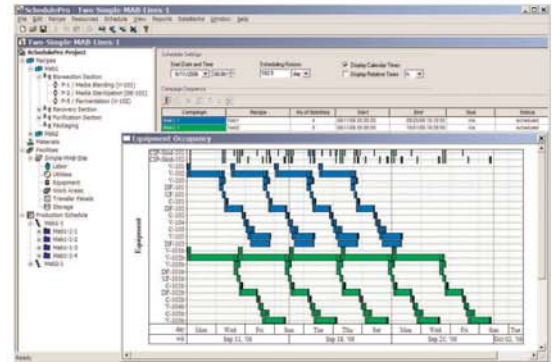
The Market-Leading Engineering Suite for Modeling, Evaluation, Scheduling, and Debottlenecking of Single & Multi-Product Facilities

SuperPro

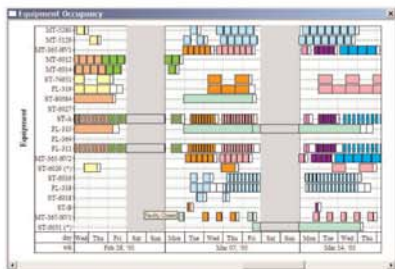


Use SuperPro Designer to model, evaluate, and debottleneck batch and continuous processes

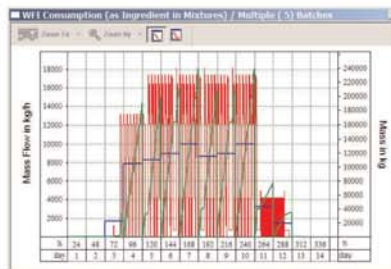
SchedulePro



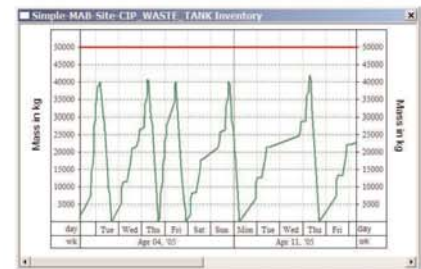
Switch to SchedulePro to schedule, model, and debottleneck multi-product facilities



Tracking of equipment occupancy in multi-product facilities



Tracking demand for resources (e.g., labor, materials, utilities, etc.)



Inventory tracking for raw materials, intermediates, products, and wastes

SuperPro Designer is a comprehensive process simulator that facilitates modeling, cost analysis, debottlenecking, cycle time reduction, and environmental impact assessment of biochemical, specialty chemical, pharmaceutical (bulk & fine), food, consumer product, mineral processing, water purification, wastewater treatment, and related processes. Its development was initiated at the Massachusetts Institute of Technology (MIT). SuperPro is already in use at more than 400 companies and 500 universities around the world (including 18 of the top 20 pharmaceutical companies and 9 of the top 10 biopharmaceutical companies).

SchedulePro is a versatile finite capacity scheduling tool that generates feasible production schedules for multi-product facilities that do not violate constraints related to the limited availability of facilities, equipment, resources and work areas. It can be used in conjunction with SuperPro (by importing its recipes) or independently (by creating recipes directly in SchedulePro). Any industry that manufactures multiple products by sharing production lines and resources can benefit from the use of SchedulePro. Engineering companies use it as a modeling tool to size utilities for batch plants, identify equipment requirements, reduce cycle times, and debottleneck facilities.

Visit our website to download detailed product literature and functional evaluation versions of our tools

INTELLIGEN, INC. • 2326 Morse Avenue • Scotch Plains, NJ 07076 • USA
Tel: (908) 654-0088 • Fax: (908) 654-3866
Email: info@intelligen.com • Website: www.intelligen.com
Intelligen also has offices in Europe and representatives in countries around the world