

**Equipment**

**FOR SALE / RENT**  
**24/7 EMERGENCY SERVICE**

**BOILERS**  
**20,000 - 400,000 #/Hr.**

**DIESEL & TURBINE GENERATORS**  
**50 - 25,000 KW**

**GEARS & TURBINES**  
**25 - 4000 HP**

*WE STOCK LARGE INVENTORIES OF:*

*Air Pre-Heaters • Economizers  
 Deaerators • Pumps • Motors  
 Fuel Oil Heating & Pump Sets  
 Valves • Tubes • Controls  
 Compressors • Pulverizers  
 Rental Boilers & Generators*

**WWW.WABASHPOWER.COM**  
**800-704-2002**

**wabash** Power Equipment Co.  
 444 Carpenter Avenue Wheeling, IL 60090

[www.aiche.org/cep](http://www.aiche.org/cep) or Circle No. 200

**PROCESS FILTRATION EQUIPMENT**

JWI Filter presses with polypro recessed plates  
 Sparkler & Niagara horizontal plate filters,  
 Model 33D17, 18S23, 1824S & 3348S  
 Stainless Steel ERTEL & STAR Filter presses  
 Nutsche filter, 10 gal, 316 SS, 35 psi  
 K-S Avery 35 cu. ft. membrane filter press, polypro plates  
 US Autojet, Pressure leaf, 400 sq. ft., stainless steel

**EVERY FILTER COMPANY**  
 (201) 666-9664 Fax (201) 666-3802  
 E-mail: [larry@averyfilter.com](mailto:larry@averyfilter.com)  
[www.averyfilter.com](http://www.averyfilter.com)

[www.aiche.org/cep](http://www.aiche.org/cep) or Circle No. 203

**ME** **MACHINERY & EQUIPMENT Co. Inc.**  
**Quality Used Equipment!**

We have over 5,000 pieces of used processing and packaging machinery available. A large portion of this equipment was used in the Chemical and Pharmaceutical Industries.

Please visit our website to view detailed descriptions and photos at:  
[www.machineryandequipment.com](http://www.machineryandequipment.com)

P.O. Box 7632 San Francisco, CA 94120 Toll Free: (800) 227-4544  
 Fax: (415) 467-2639 Phone: (415) 467-3400  
 Email: [info@machineryandequipment.com](mailto:info@machineryandequipment.com)

[www.aiche.org/cep](http://www.aiche.org/cep) or Circle No. 205

**“About that defoamer... we just might take some off your hands - if the price is right!”**



**Don't wait til the last minute. Call now: 800-822-4460**

Environmentally friendly Foam Control Agents and Silicone Emulsions. Manufactured to exacting specifications in concentrations from 5 to 100% and available in technical, food, and kosher grades. UNBEATABLE CUSTOMER SERVICE.

**TAYLOR**  **CHEMICAL COMPANY, INC.**  
 Call: 770-339-4460 -or- [www.TaylorChemical.com](http://www.TaylorChemical.com)

[www.aiche.org/cep](http://www.aiche.org/cep) or Circle No. 201

**HEAT EXCHANGERS**



**FOR GASES & LIQUIDS!**

**Talk Directly with Design Engineers!**  
 Blower Cooling Vent Condensing

**Xchanger**

(952) 933-2559 Fax: (952) 933-5647  
[www.xchanger.com](http://www.xchanger.com) [info@xchanger.com](mailto:info@xchanger.com)

[www.aiche.org/cep](http://www.aiche.org/cep) or Circle No. 204

**BOILERS**  
**Available Immediately!**



**lease • rental • sale**

(3) New 250,000 PPH 750 PSI / 750 Deg. S.H. with Low NOx Burners  
 (2) New 250,000 PPH 850 PSI / 750 Deg. S.H. with Low NOx Burners

250,000-850 PSI / 750 Deg. F.	<b>TRAILER MOUNTED</b>
250,000-750 PSI / 750 Deg. F.	72K-350 PSI
180,000-750 PSI / 750 Deg. F.	70K-350 PSI
165,000-1025 PSI / 850 Deg. F.	70K-350 PSI
165,000-350 PSI	45K-750 PSI
150,000-750 PSI / 750 Deg. F.	40K-350 PSI
135,000-750 PSI / 750 Deg. F.	36K-300 PSI
120,000-350 PSI	30K-300 PSI
120,000-725 PSI / 750 Deg. F.	24K-300 PSI
70,000-350 PSI	
60,000-750 PSI / 750 Deg. F.	
50,000-350 PSI	
40,000-750 PSI	
40,000-350 PSI	
30,000-350 PSI	
20,000-1600 PSI	
10-1,000 HP / 15-250 PSI	

**EMERGENCY SERVICE 24HR EMERGENCY SERVICE**

**INDECK**  
 INDECK POWER EQUIPMENT COMPANY  
 tel 847.541.8300 / 800.446.3325  
 fax 847.541.9984  
[info@indeck-power.com](mailto:info@indeck-power.com)  
[www.indeck.com](http://www.indeck.com)

[www.aiche.org/cep](http://www.aiche.org/cep) or Circle No. 202

**LOOKING TO ADVERTISE?**

To be included in CEP Marketplace, CEP Showcase or CEP Ad Lits

Contact:  
**Doris B. Deutsch,**  
 Global Display Sales Manager  
 at 718-961-8958  
 or  
[dorid@aiche.org](mailto:dorid@aiche.org)

**EQUIPMENT FOR SALE**

16 TON C-FRAME MULTIPRESS NEW IN '96  
 300 GALLON BP MDL JUMM-2 W/OIL HEATER  
 300 GALLON BP MDL NMM VACUUM MIXER  
 AARON 1 GAL. SS SIGMA BLADE LAB MIXER  
 BAKER-PERKINS LAB DOUGH MIXER, UNUSED  
 DAY 550 GAL DAYMAX 100 HP SS DISPERSER  
 BONNOT 4" EXTRUDER LINE W/CONVEYORS  
 ABBE 256 SS CU. FT. DBL CONE MIXER  
 250 GAL PROCESS EQUIP. SANITARY TANK  
 250 GAL PROCESS EQUIP. SANITARY TANK ON WHEELS  
 250 GAL PRECISION INSULATED SS SANITARY TANK  
 WITH 3/4 HP LIGHTIN AGITATOR, UNUSED  
 GRUENBERG LAB VACUUM TRAY DRYER, 650 DEG.

WEB SITE MOHAWKMACHINERY.COM

MOHAWK MACHINERY  
 CINCINNATI OH  
 513-771-1952  
 CALL JIM MUELLER'S CELL PHONE 513-608-7902

[www.aiche.org/cep](http://www.aiche.org/cep) or Circle No. 206

**Consulting**



**CRYSTALLIZATION & PRECIPITATION**

**Dr. Wayne J. Genck** Genck International

3 Somonauk Court, Park Forest, IL 60466  
 Tel (708) 748-7200 Fax (708) 748-7208  
[genckintl@aol.com](mailto:genckintl@aol.com) — <http://www.genckintl.com>

- Design/Scale-up
- Troubleshooting
- Particle Habit
- Size Distribution
- Purity
- Product Micro-Analysis
- Laboratory Investigations
- Caking
- Polymorphism
- Filtration
- Drying
- Kinetics Studies

◆ ◆ ◆ Industrial Seminars ◆ ◆ ◆

[www.aiche.org/cep](http://www.aiche.org/cep) or Circle No. 207

**Continuing Education 2008 Calendar**



**Orlando, Florida – May**

Distillation in Practice **CH004** ..... May 5-7

**Chicago, Illinois – May**

Chemical & Bioengineering Fundamentals for Technical and Scientific Professionals **CH024** ..... May 19-21

PSM: Requirements and the Development of Management Systems **CH501** ..... May 19-21

Applying Good Manufacturing Practice in the Food and Pharmaceutical Industries **CH750** ..... May 22-23



**San Francisco, California – June**

HAZOP Studies and other PHA Techniques for Process Safety and Risk Management **CH157** ..... June 9-11

Essentials of Chemical Engineering for Non-Engineers **CH710** ..... June 9-11

Flow of Solids in Bins, Hoppers, Chutes & Feeders **CH032** ..... June 10-11

Pneumatic Conveying of Bulk Solids **CH033** ..... June 12

Bioseparations: Principles, Applications, and Scale-up **CH401** ..... June 12-13

Near Infrared Spectroscopy and Process Analytical Technology **CH228** ..... June 12-13

Heat Exchanger Design and Operation **CH294** ..... June 12-13

Advanced Concepts for Process Hazard Analysis **CH754** ..... June 12-13

**Houston, Texas – June**

Multi-Disciplinary Process Development: From Lab to Plant **CH757** ..... June 23-24

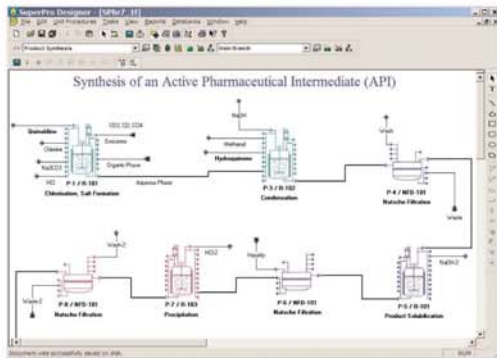
For complete course descriptions and to register, go to <http://catalog.asme.org> and search using the CH code for the course or phone 1-800-843-2763

[www.aiche.org/cep](http://www.aiche.org/cep) or Circle No. 123

# Intelligen Suite

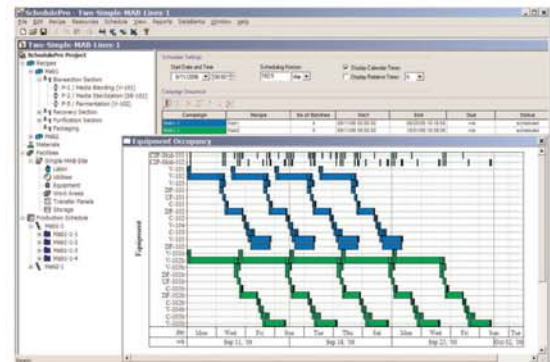
The Market-Leading Engineering Suite for Modeling, Evaluation, Scheduling, and Debottlenecking of Single & Multi-Product Facilities

## SuperPro



Use SuperPro Designer to model, evaluate, and debottleneck batch and continuous processes

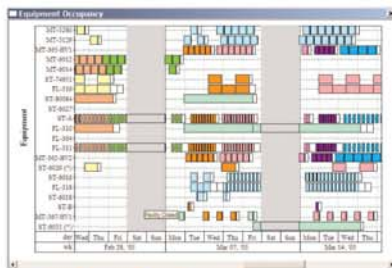
## SchedulePro



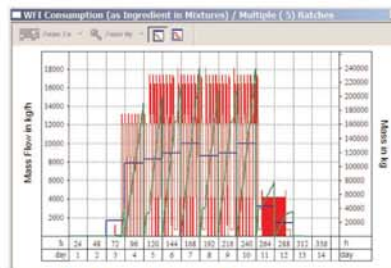
Switch to SchedulePro to schedule, model, and debottleneck multi-product facilities



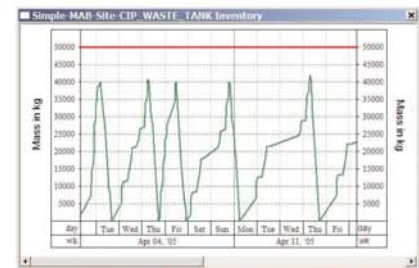
Recipe DB



Tracking of equipment occupancy in multi-product facilities



Tracking demand for resources (e.g., labor, materials, utilities, etc.)



Inventory tracking for raw materials, intermediates, products, and wastes

**SuperPro Designer** is a comprehensive process simulator that facilitates modeling, cost analysis, debottlenecking, cycle time reduction, and environmental impact assessment of biochemical, specialty chemical, pharmaceutical (bulk & fine), food, consumer product, mineral processing, water purification, wastewater treatment, and related processes. Its development was initiated at the Massachusetts Institute of Technology (MIT). SuperPro is already in use at more than 400 companies and 500 universities around the world (including 18 of the top 20 pharmaceutical companies and 9 of the top 10 biopharmaceutical companies).

**SchedulePro** is a versatile finite capacity scheduling tool that generates feasible production schedules for multi-product facilities that do not violate constraints related to the limited availability of facilities, equipment, resources and work areas. It can be used in conjunction with SuperPro (by importing its recipes) or independently (by creating recipes directly in SchedulePro). Any industry that manufactures multiple products by sharing production lines and resources can benefit from the use of SchedulePro. Engineering companies use it as a modeling tool to size utilities for batch plants, identify equipment requirements, reduce cycle times, and debottleneck facilities.

*Visit our website to download detailed product literature and functional evaluation versions of our tools*

**INTELLIGEN, INC.** • 2326 Morse Avenue • Scotch Plains, NJ 07076 • USA  
Tel: (908) 654-0088 • Fax: (908) 654-3866  
Email: [info@intelligen.com](mailto:info@intelligen.com) • Website: [www.intelligen.com](http://www.intelligen.com)  
*Intelligen also has offices in Europe and representatives in countries around the world*