

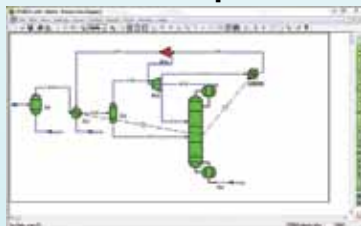


XPSIM

eXtending Process SIMulation to flow assurance

- ✓ Characterization of oil&gas properties for upstream
- ✓ General unit operations
- ✓ Single and multiphase pipeline simulation
- ✓ Gathering systems and general networks

ALL in ONE product



Visit www.xpsimworld.com for more information.

www.aiche.org/cep or Circle No. 150 on p.71

Acid Resistant Epoxy

EP21ARHT Epoxy Adhesive

- Low viscosity
- Serviceable from -60°F to +400°F
- Electrically insulative



MASTERBOND
ADHESIVES | SEALANTS | COATINGS

Hackensack, NJ 07601 USA
+1.201.343.8983 • main@masterbond.com

www.masterbond.com

www.aiche.org/cep or Circle No. 151 on p.71

VMGSim™ Process Simulator
Bringing your vision into reality

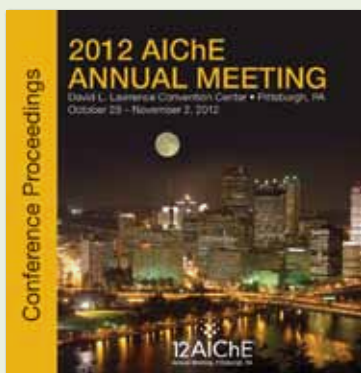
Design ▶ Troubleshoot ▶ Optimize
We provide accurate, robust and cost-effective process simulation solutions. Your productivity and competitiveness are our priorities.

Gasification for GTL

- ▶ Steady State and Dynamic Process Simulation for the Oil, Gas and Chemical Industries.

virtual materials group inc.
www.virtualmaterials.com

www.aiche.org/cep or Circle No. 152 on p.71

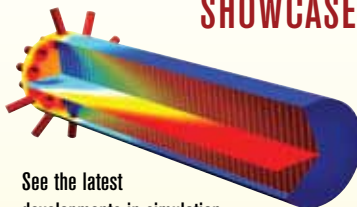


The Proceedings of the 2012 AIChE Annual Meeting are now available online, as individual papers, or as a CD-ROM by going to www.aicheproceedings.org. The proceedings include over 6,000 abstracts and extended abstracts. Past proceedings are also available.

You may order CD-ROMs by calling Omnipress at 1-800-828-0305 or 608-246-2600 (international callers).

www.aiche.org/cep or Circle No. 153 on p.71

INSTANT ACCESS TO CHEMICAL ENGINEERING SHOWCASE



See the latest developments in simulation and modeling increase productivity in the design of chemical processes and reactors. The brand new Chemical Showcase from COMSOL® includes a range of great resources for all things chemical, including:

- Videos
- Models
- Articles
- White papers
- And more ...

Request instant access today at: www.comsol.com/cep-showcase

Tel: 781-273-3322



www.aiche.org/cep or Circle No. 154 on p.71

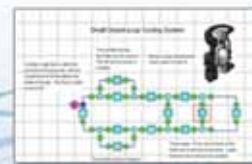
Design Flow Solutions®

DF Branch | DF DesignNet

Design Flow Solutions is the most comprehensive, cost effective engineering aid available for complete hydraulic analysis of complex piping systems.

This powerful software package provides engineers with:

- Complete hydraulic analysis of complex piping,
- Effective solutions to fluid flow problems,
- Fast, reliable reference information.



See our website for more information and to download a free evaluation copy:

www.abzinc.com/cep

ABZ, Incorporated
4451 Brookfield Corp. Dr., Suite 107
Chantilly, VA 20151
Phone: (800) 747-7401
Fax: (703) 631-5282
Email: sales@abzinc.com



www.aiche.org/cep or Circle No. 155 on p.71