

EQUIPMENT

HEAT EXCHANGERS

◀ Liquid Cooled

Air Cooled ▶

FOR GASES & LIQUIDS!

Talk Directly with Design Engineers!
Blower Cooling Vent Condensing

INDUSTRIAL HEAT EXCHANGERS
XCHANGER

(952) 933-2559 info@xchanger.com

AARON equipment company inc.

We Buy Equipment!

We Are "Sniffing Out"
Quality Process Equipment

- > Ribbon Blenders
- > Double Cone Dryers
- > Twin Shell Blenders
- > Paddle Mixers
- > Turbulizers
- > Tanks, Silos, Reactors
- > Screeners and more...

Tell Us What You Have For Sale

www.aaronequipment.com/sniff
or call: **855-791-5109**

DISPLAY, CLASSIFIED AND WEB ADVERTISING

Nathan Lott
Global Sales Manager,
Recruitment, Advertising and DIPPR
120 Wall Street,
New York, NY 10005 •
Tel: 646-495-1361 •
Email: nathl@aiche.org

CONSULTING

CRYSTALLIZATION & PRECIPITATION

Dr. Wayne J. Genck Genck International
3 Somonauk Court, Park Forest, IL 60466
Tel (708) 748-7200 Fax (708) 748-7208
genckintl@aol.com — <http://www.genckintl.com>

- Design/Scale-up
- Size Distribution
- Laboratory Investigations
- Filtration
- Troubleshooting
- Purity
- Caking
- Drying
- Particle Habit
- Product Micro-Analysis
- Polymorphism
- Kinetics Studies

◆ ◆ ◆ Industrial Seminars ◆ ◆ ◆

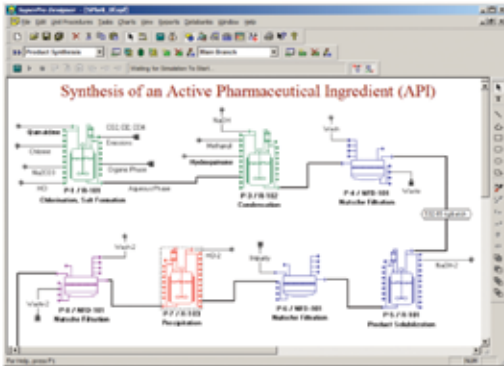
ADVERTISERS' INDEX

Aaron Equipment Company www.aaronequipment.com/sniff	60
AdvantaPure www.advantapure.com	59
Aon Affinity www.aicheinsuranceplans.com	IBC
Chemstations www.chemstations.com	BC
Comsol www.comsol.com	9, 59
Genck International www.genckintl.com	60
HTRI www.htri.net	17
Intelligen www.intelligen.com	61
Master Bond www.masterbond.com	59
Ohio University www.ohio.edu/engineering/russfellows	2
ProSim www.prosim.net	11
RedGuard www.redguard.com	IFC
Xchanger www.xchanger.com	60
Zeeco www.zeeco.com	7

Intelligen Suite®

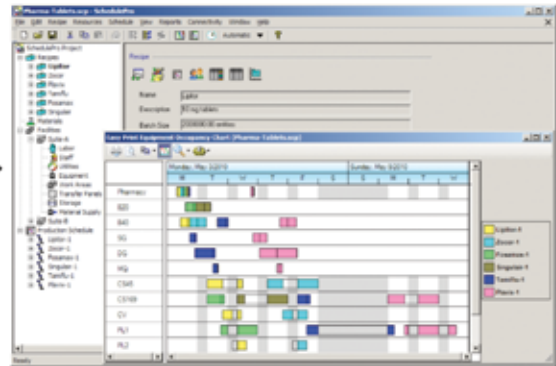
The Market-Leading Engineering Suite for Modeling, Evaluation, Scheduling, and Debottlenecking of Multi-Product Facilities

SuperPro®

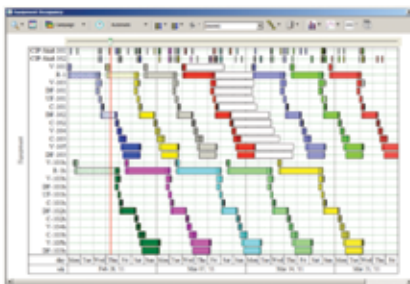


Use SuperPro Designer to model, evaluate, and optimize batch and continuous processes

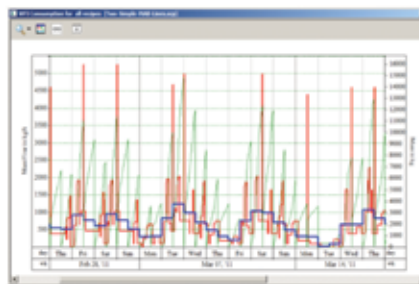
SchedulePro®



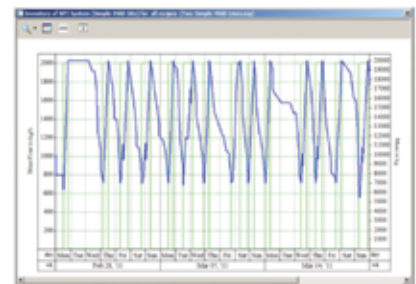
Migrate to SchedulePro to model, schedule, and debottleneck multi-product facilities



Easy production tracking, conflict resolution and rescheduling



Tracking demand for resources (e.g., labor, materials, utilities, etc.)



Managing inventories for input, intermediate, and output materials

SuperPro Designer is a comprehensive process simulator that facilitates modeling, cost analysis, debottlenecking, cycle time reduction, and environmental impact assessment of integrated biochemical, bio-fuel, fine chemical, pharmaceutical (bulk & fine), food, consumer product, mineral processing, water purification, wastewater treatment, and related processes. Its development was initiated at the Massachusetts Institute of Technology (MIT). SuperPro is already in use at more than 500 companies and 900 universities around the globe (including 18 of the top 20 pharmaceutical companies and 9 of the top 10 biopharmaceutical companies).

SchedulePro is a versatile production planning, scheduling, and resource management tool. It generates feasible production schedules for multi-product facilities that do not violate constraints related to the limited availability of equipment, labor, utilities, and inventories of materials. It can be used in conjunction with SuperPro (by importing its recipes) or independently (by creating recipes directly in SchedulePro). Any industry that manufactures multiple products by sharing production lines and resources can benefit from the use of SchedulePro. Engineering companies use it as a modeling tool to size shared utilities, determine equipment requirements, reduce cycle times, and debottleneck facilities.

Visit our website to download detailed product literature and functional evaluation versions of our tools

INTELLIGEN, INC. • 2326 Morse Avenue • Scotch Plains, NJ 07076 • USA

Tel: (908) 654-0088 • Fax: (908) 654-3866

Email: info@intelligen.com • Website: www.intelligen.com

Intelligen also has offices in Europe and representatives in countries around the world