



The Western Palmetto Informer

American Institute of Chemical Engineers

October 2011

Volume 11, Issue 2

In This Issue

- Next Meeting: October 11th @ Madren Center in Clemson
- 2011-2012 Calendar of Events
- Clemson Scholarship Application
- 2011-2012 Officers and Executive Committee

Contact Information

Visit our website:

<http://wsc.aiche.org>

Email us at:

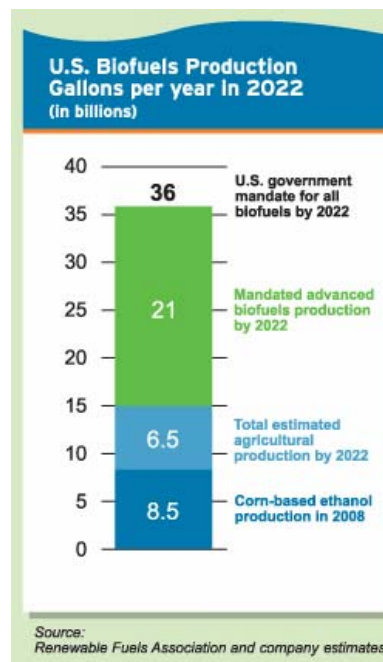
sec@wscaiche.org

September Meeting Thank You

WSCAICHE would like to extend a thank you to Gary Tompkins and Marty Milne for the excellent discussion on the current job market.

NEXT MEETING

October Meeting: "Producing Ethanol from Garbage: Ready for Commercialization"



Fulcrum BioEnergy produces advanced biofuel from garbage. We use sorted, post-recycled municipal solid waste (MSW) and convert it into ethanol using a two-step process that consists of gasification of MSW followed by alcohol synthesis. These two processes have been tested and demonstrated and are ready to be utilized on a commercial scale. Our first project, Sierra BioFuels, is ready for construction in the Reno, Nevada area. The site is selected, feedstock contracts are in place, permits to construct are secured, and the EPC contractor is selected. Sierra BioFuels will begin producing approximately 10 million gallons of ethanol per year during the second half of 2013. See "www.fulcrum-bioenergy.com" for more information.

Lewis Lee Rich, Vice President of Engineering and Operations. Lee brings to Fulcrum a unique perspective on engineering, acquired from more than 30 years of domestic and international experience in the chemical and energy industries. Lee has a B.S. in chemical engineering from the Georgia Institute of Technology. He holds an M.B.A. from the University of Tulsa and an M.A. in interdisciplinary studies from the University of Houston.



A Rendition of Fulcrum BioEnergy's Sierra BioFuels MWS to Ethanol Plant.

OCTOBER MEETING SUMMARY

- TITLE:** Fulcrum BioEnergy - Producing Ethanol from Garbage: Ready for Commercialization
- DATE:** Tuesday, October 11, 2011
- TIME:** 6:00 PM Social
6:30 PM Dinner
7:00 PM Presentation
- LOCATION:** **The Conference Center and Inn at Clemson University**
230 Madren Center Drive
Clemson, SC 29634-5673
- DIRECTIONS:** <http://www.clemson.edu/centers-institutes/madren/directions.html>
- COST:** \$10 for Members
\$15 for Non-members
Free to Attend Presentation Only

Please reply to Secretary Alan Vibber at sec@wscaiche.org by Friday, October 7, 2011.

Note that the dinner portion of the meeting is not mandatory. Arrive by 7:00 pm if you want to attend the presentation without dinner.

Only RSVP if you plan to dine with us.

2011-2012 Calendar of Events

DATE	LOCATION	TOPIC
11 Oct 2011	Clemson University Madren Center	Lewis Lee Rich - "Producing Ethanol from Garbage: Ready for Commercialization"
8 Nov 2011	Hilton	Mark Benack - Preventative Maintenance Software **Joint meeting with The Association for Operations Management (APICS)**
10 Jan 2012	Trane Carolinas Office - 288 Fairforest Way, Greenville	Joe Cain - HVAC Pump / Chiller Equipment and Controls
14 Feb 2012	Hilton	TBA - Clemson University Provided Speaker
13 Mar 2012	Hilton	Robbie Hilton - Solar Industry
Mar 2012	Carolina First Center	Science Fair Judging for the Greenville County Science Fair
10 Apr 2012	TBA	Plant Tour
May 2012	TBA	Social

Active participation in professional societies as well attending our professional and technical presentations count towards Continuing Professional Competency requirements for Licensed Professional Engineers. Upon request, the Section Secretary can provide attendance verifications for this purpose to our members.

Annual WSCAICHe's \$1000 Clemson Scholarship

Calling all you Clemson Chemical Engineering Seniors and Juniors with projected graduations between August 2012 and May 2013. Fill out the attached scholarship form and email it the section secretary by midnight January 28th to apply for the WSCAICHe \$1000 Clemson Chemical Engineer Scholarship. The award presentation will be made during the February 14th Meeting.

Attached to this month's newsletter is the Clemson Scholarship Application. Instructions can be found on the application form.

2011-2012 Officers and Executive Committee

POSITION			
POSITION	NAME	EMAIL	PHONE
Chair	Don Gurney	degurney@charter.net	864-879-7935
Vice-Chair	Karl McCaleb	kmccaleb@bellsouth.net	843-858-1182
Secretary	Alan Vibber	sec@wscaiche.org	864-554-3906
Treasurer	Mike Thompson	michael.thompson@dayzim.com	N/A
Webmaster	Eugene Gill	eugene@eugenegill.com	864- 281-8627
Historian	David Hine	dhine@fujifilm.com	864-993-8235
Former Chair	Rick Vogel	rvogel1@hotmail.com	864-420-5777
Executive Committee	TBD	TBD	TBD
Executive Committee	TBD	TBD	TBD

WESTERN SOUTH CAROLINA AICHE SECTION SCHOLARSHIP

The Western South Carolina Section of the American Institute of Chemical Engineers is pleased to support the Chemical Engineering program at Clemson University by offering a \$1,000 scholarship. This scholarship is to be awarded to a returning Chemical Engineering student with a projected graduation date between August 2012 and May 2013

The \$1,000 award will be presented at the joint meeting between the Clemson Student Chapter and the Western South Carolina AICHE Section on February 14, 2012.

Applications are available at <http://wsc.aiche.org>. Completed applications are due to the Western South Carolina AICHE Section Secretary at sec@wscaiche.org by midnight on January 28, 2012, in PDF or Word format. The Secretary will email reply receipt of application.

Name of Student: _____

Student email address: _____ Phone: _____

Student ID # _____ AICHE Student Chapter Member? Yes _____ No _____

Expected Graduation Date: _____

Chemical Engineering Courses Completed	Semester Course was completed	Credits	Grade
_____	_____	_____	_____
_____	_____	_____	_____
_____	_____	_____	_____
_____	_____	_____	_____
_____	_____	_____	_____
_____	_____	_____	_____
_____	_____	_____	_____
_____	_____	_____	_____
_____	_____	_____	_____

Calculate the average of *only the courses listed above* to determine your chemical engineering GPA: _____

List extracurricular activities and describe special duties (e.g., offices held, etc.)

Attach two written essays (250 words maximum per essay, typed):

- 1) Describe your career goals as a chemical engineer.
- 2) Describe (in words that a freshman engineering student could understand) what a practicing chemical engineer does.