



AIChE Management Division Survey

2017

Contents

Background.....	3
Executive Summary.....	4-8
Demographics.....	9-10
Observation & Implications.....	11-25
Appendices: Data Tables.....	26-75
Survey Question Repository.....	76

Background

Mission:

The AIChE Management Division facilitates a networking base, training, and opportunities to present topics pertinent to Technical Management, Project Management, Entrepreneurship, Leadership and other management roles and responsibilities that chemical engineers typically need as they advance in their careers.

Goals:

Sponsorship of peer and expert panel management sessions and co-sponsorship of many sessions with fellow Institute members, especially Young Professionals interested in a career path toward management and leadership roles at AIChE conferences and seminars. Provide webinars and newsletters that inform and help business owners, entrepreneurs, and managers through senior executives become better leaders, make better decisions and ultimately achieve better results as related to, and serves the interest of, the chemical engineering profession.

Areas:

- Technical Management
- Entrepreneurship
- Technology Collaboration
- Ethics in Technical Management
- Transition to Management

Executive Summary

AIChE's Management Division wanted to explore and best gauge its effectiveness in reaching those currently fulfilling a management role, as well as understand who may no longer be active within Management Division itself, but retain a management role and previously participated within the Management Division.

Division leaders met to discuss the needs, objectives, and key data to be gleaned from conducting such a survey. The Marketing team then drafted a survey, serving as the mechanism to chronicle key attributes, identify gaps in delivery and gather qualitative feedback on the reasoning for or against engaging with AIChE's Management Division.

Conducted entirely online, the survey was distributed twice via email as well as posted to the AIChE Twitter and Facebook pages; reaching anyone within the criteria of currently active AIChE's Management Division members, anyone who's previously been in Management Division, as well as any members with "Manager" in their job title. In total, 13,000 people received the survey, with an average of 3,000 opening it. The survey collected responses from 411 differing individuals; this participation rate yields a margin of error of +/-4.49%.

Executive Summary

- **59.12%** of respondents are **current AIChE members**
- **55.23%** are **currently in a management role**
- **15.57%** of respondents are **not in a management role, but looking to move into one**
- **52.03%** of respondents **were not aware of the Management Division but would like to learn more**
- Majority of respondents **manage 1-5 people (47.37%)**
- **Top 3 management challenges** indicated by respondents who are currently in a management role:
 - Managing staff based in different locations, and possibly different time zones (14.02%)
 - Communicating effectively (13.16%)
 - Creating a collaborative team (11.28%)
- Of respondents who are a **part of the management division**, they became a member because:
 - Networking
 - Management issues and standards

Executive Summary

- Of those respondents who chose to **no longer participate in the management division, the top reasons were:**
 - Not enough time to participate (26.67%)
 - Competing interests (20%)
 - Did not enjoy the work the division was doing (13.33%)
 - Disagreement with another member (13.33%)
- Only 4 viable answers were given to around how respondents may **consider rejoining the management division.** They are looking for:
 - More conversations for entrepreneurship, ventures, investing, and management consulting
 - E-newsletters
 - Risk analysis in HAZOP
 - Stay in touch with everyone
- In general, respondents find the **top 3** things of **most value** when **joining a professional community or forum?**
 - Exposure to new techniques and tools (21.39%)
 - Making new professional contacts/networking (16.8%)
 - Downloadable information and resources (15.01%)

Executive Summary

- Respondents noted what they would **like to see from a community that they can't get anywhere else** (open ended):
 - **Management training and professional development unique to chemical engineers**
 - Developing **subordinates**
 - **Management consulting case studies**
 - **Startup and investor matchmaking**
 - **Global** success stories and more international perspectives
 - Networking around **external innovation**
 - **Job portals** for **global placements**
 - **Consulting assignments** and other **interim employment opportunities**
 - Blend of **technical needs** with **professional situation** in a managerial role
 - Manager training in **Ammonia plants**
 - **Free access to standards, journals, webinars, and technical knowledge sharing**

Executive Summary

- **32.4%** of respondents are **55-64 years old**
- **46.91%** have a **Bachelor degree**
- **38.89%** have a **senior manager/manager title**
- **Top 3 industry sectors** they work in:
 - Engineering/Design/Construction/Consulting (14.01%)
 - Specialty Chemicals (10.92%)
 - Petroleum Production/Refining (10.08%)
- **78.01%** do not have an **MBA**
- **62.22%** have not attended an AIChE National or Local/Regional **meeting** in the last 5 years
- If they did attend, the majority goes to **local section events (31.43%)**
- **72.26%** prefer **emails** as their **communication method**
- **Top 2 AIChE outlets** respondents follow and/or participate in:
 - AIChE's e-newsletter, **AIChExchange (32.79%)**
 - AIChE's **LinkedIn group (10.55%)**

Demographics

Overview:

- Member vs. non-member
- Those in a management role currently
- Those formerly in a management role
- Those in a management role who want to participate in Management Division
- Those in a management role who've participated in Membership Division before, but no longer involved.

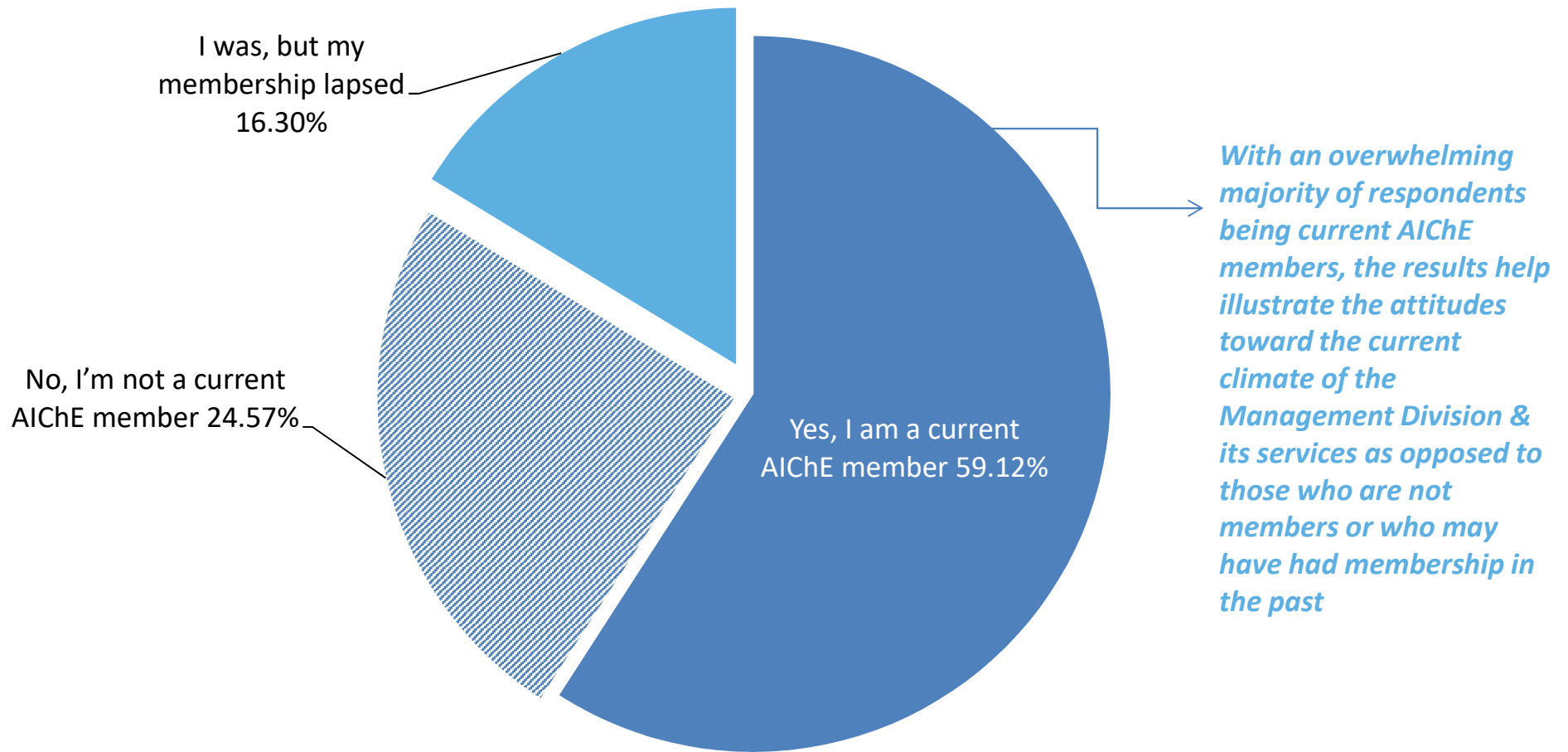
Demographics

Average Age: *55 – 64 years old*
32% of respondents

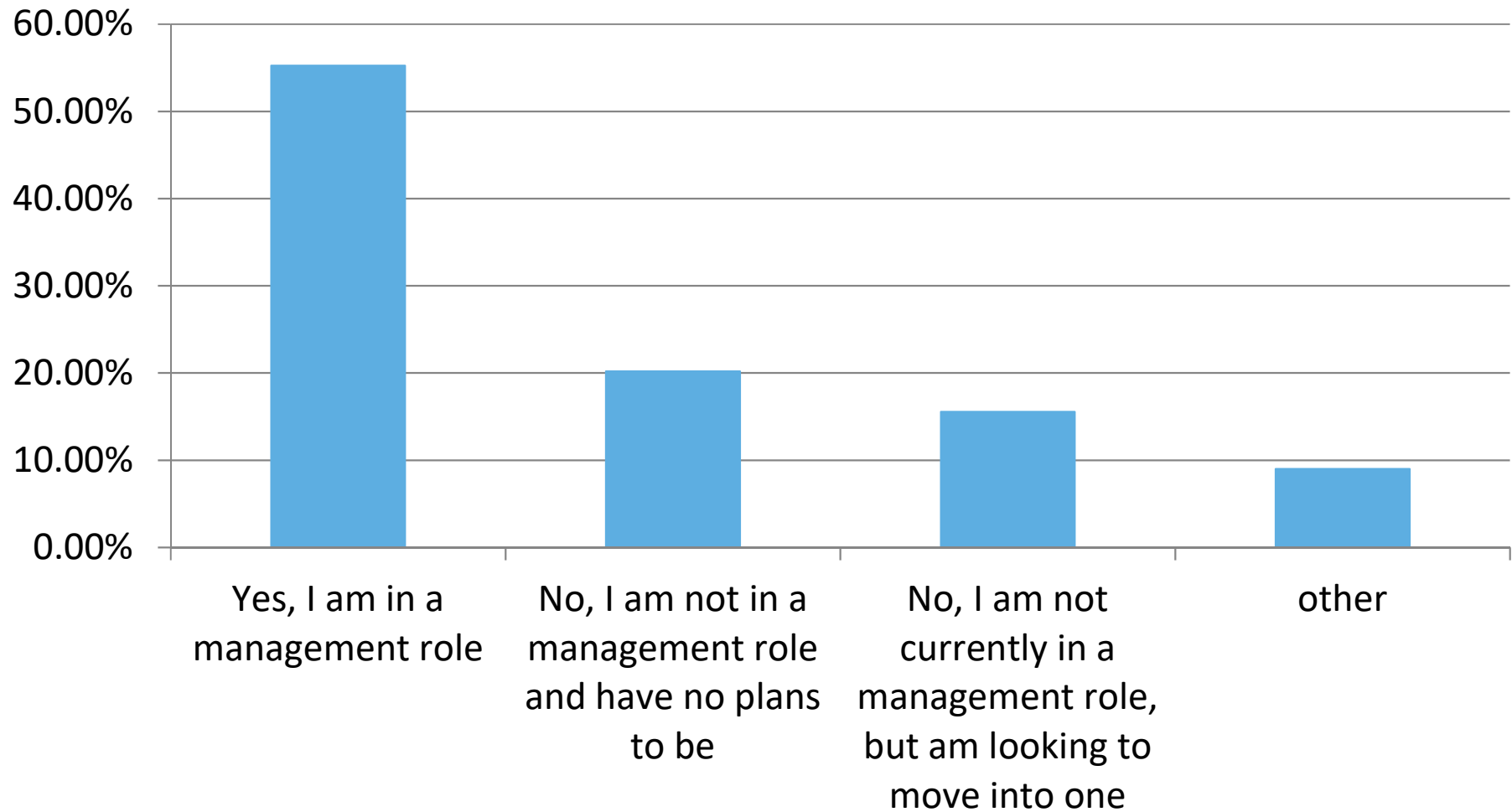
Average Degree Held: *Bachelor of Science*
46% of respondents

Average Job Title: *Senior Manager/Manager*
38% of respondents

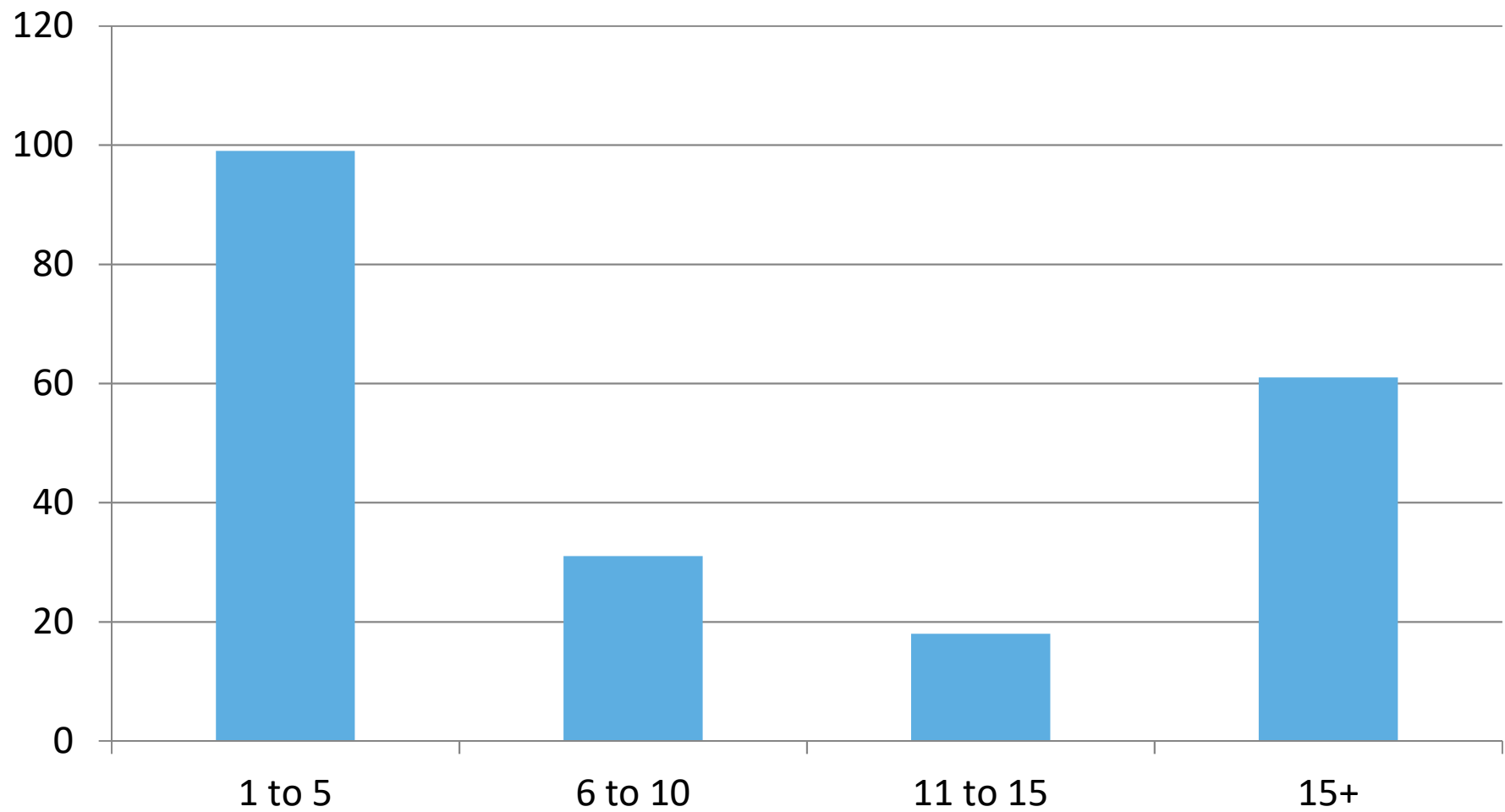
Are You Currently an AIChE Member?



Are Respondents Currently in a Management Role?



How Many People Do You Currently Manage?



Management Challenges

Proximity:

- **Managing staff based in different locations, and possibly different time zones**
14.02% of respondents
- **Creating a Collaborative team** 11.28%
- **Not spending enough time with each employee** 10.94%

Authoritative:

- **Communicating effectively** 13.1% of respondents
- **Delegating tasks to subordinates** 9.57%
- **Dealing with internal conflicts** 10.94%
- **Enforcing policies and administering policies fairly and consistently** 8.21%

Opportunity for Management Division to evaluate what respondents deem as their main managerial challenges to address them in differing ways, further appealing to current and potential members.

Management Division – What're Members Looking to Receive?



■ To be a recognized for my professional contributions (5%)

■ Exposure to new techniques and tools and that can help me professionally (25%)

■ In-person training (3%) ■ Online training (11%)

■ To be able to contribute to conference programming (3%) ■ To be published (3%)

■ Making new professional contacts/networking (17%)

■ Volunteering and doing service (5%)

■ Publication subscription, such as an e-newsletter or magazine (9%)

■ Downloadable information and resources (16%) ■ None (1%) ■ Other (1%)

Members and those interested in Management Division are attracted to the prospect of networking opportunities and a library of available resources

25% of respondents

“Exposure to new techniques and tools and that can help me professionally”

17%

“Making new professional contacts/networking”

16%

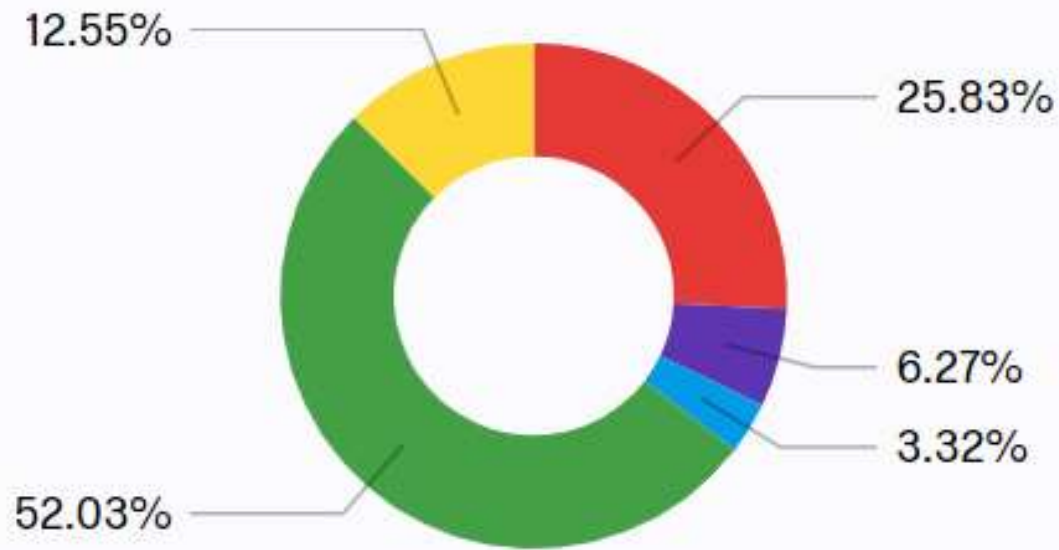
“Downloadable information and resources”

***“Are You Familiar With One of the
AIChE’s Communities, the
Management Division?”***

*“No, I am Not Aware But I
Would Like to Learn More”*

52.03%

Of Respondents



■ Yes, I am aware but never participated

■ Yes, I am aware and am currently participating

■ Yes, I am aware but am no longer participating

■ No, I am not aware but I would like to learn more

■ No, I am not aware and this would be of no interest to me

52.03%

=

***Opportunity to
expand reach***

What Attracted You to Become a Member of the Management Division? (open ended)

- “Sharing and exchanging ideas with professional engineers that help in professional development.”
- “Developing my knowledge and making exchanges with others”
- “Good opportunity to interact when possible and read info related to this group”
- “Other professionals of similar rank and caliber”
- “Networking”

This question reiterated the notion that what is most important and beneficial to potential members of the Management Division is the opportunity for networking and the ability to share and review resources.

Areas of Improvement

With an understanding that networking/the spreading of knowledge, ideas and resources are the focal point of what drives interest in membership, what is it that could be improved upon or identified as a principal reason to no longer participate in the Management Division?

Former Management Division Members Cite The Following as Reasons to Cease Participation:

- ***Not feeling a sense of community***
- ***Not enjoying the work the division was doing***
- ***Lack of “Conversations for entrepreneurship, ventures, investing, and management consulting”***
- ***Lack of providing “Electronic newsletters usually of interest”***

Actionable Items:

When asked what they would like to see from a community, like the Management Division, that they can't get anywhere else:

- **Management training and professional development unique to chemical engineers**
- **Developing subordinates**
- **Management consulting case studies**
- **Startup and investor matchmaking**
- **Global success stories and more international perspectives**
- **Networking around external innovation**
- **Job portals for global placements**
- **Consulting assignments and other interim employment opportunities**
- **Blend of technical needs with professional situation in a managerial role**
- **Manager training in Ammonia plants**
- **Free access to standards, journals, webinars, and technical knowledge sharing**

Actionable Items:

AIChE meetings & Preferred ways of communication

- 62.22% have not attended an AIChE National or Local/Regional meeting in the last 5 years
- If they did attend, the majority goes to local section events (31.43%)
- 72.26% prefer emails as their communication method
- Top 2 AIChE outlets respondents follow and/or participate in:
 - AIChE's e-newsletter, AIChExchange (32.79%)
 - AIChE's LinkedIn group (10.55%)

Consider promoting new initiatives and the value of the Management Division through email, AIChExchange (monthly enews). Management Division committee members should consider being active on AIChE's LinkedIn group and pose management related questions.

Appendices: Data Tables

Are You a Current AIChE Member?

#	Answer	%	Count
1	Yes, I'm a current AIChE member	59.12%	243
2	No, I'm not a current AIChE member	24.57%	101
3	I was, but my membership has lapsed	16.30%	67
	Total	100%	411

Are You Currently in a Management Role?

#	Answer	%	Count
1	Yes, I am in a management role	55.23%	227
2	No, I am not in a management role and have no plans to be	20.19%	83
3	No, I am not currently in a management role, but am looking to move into one	15.57%	64
4	Other	9.00%	37
	Total	100%	411

How Many People do You Currently Manage?

#	Answer	%	Count
1	1-5	47.37%	99
2	6-10	14.83%	31
3	11-15	8.61%	18
4	More than 15	29.19%	61
	Total	100%	209

Respondents currently in a management role: What Are Some of Your Management Challenges?

#	Answer	%	Count
1	Managing staff based in different locations, and possibly different time zones	14.02%	82
2	Not spending enough time with each employee	10.94%	64
10	Not providing employees with adequate professional development opportunities	9.74%	57
3	Delegating tasks to subordinates	9.57%	56
4	Enforcing policies and administering policies fairly and consistently	8.21%	48

Respondents currently in a management role: What Are Some of Your Management Challenges? (Cont.)

#	Answer	%	Count
5	Dealing with internal conflicts	10.94%	64
6	Creating a collaborative team	11.28%	66
7	Keeping the business's evolution in mind	8.72%	51
8	Communicating effectively	13.16%	77
9	Other	3.42%	20
	Total	100%	585

What Are Some of Your Management Challenges?

“Other” Responses

Other
Adverse business condintions
Managing billable time for employees in a down market
Too much multitasking; not enough resources
Process safety emphasis
Managing by influence when not a line manager
Succession planning
Retired
Compensating Sales Team
Quality System

Are You Familiar With One of AIChE's Communities, the Management Division?

#	Answer	%	Count
1	Yes, I am aware but never participated	25.83%	70
2	Yes, I am aware and am currently participating	6.27%	17
3	Yes, I am aware but am no longer participating	3.32%	9
4	No, I am not aware but I would like to learn more	52.03%	141
5	No, I am not aware and this would be of no interest to me	12.55%	34
	Total	100%	271

What Attracted You to Become a Member of the Management Division?

What attracted you to become a member of the Management Division?

sharing and exchanging idea with professionals engineers that help in professional development.

I am interested in Chemical Engineering and AIChE because of its Standards

Networking

Develop my knowledge and make exchanges with other ammonia plants

help

natural area of interest

I found it to be relevant to my role.

Good opportunity interact when possible and read info related to this group

I accept more challenges

Nature of being horizontal service within AIChE

What Attracted You to Become a Member of the Management Division? (Cont.)

What attracted you to become a member of the Management Division?

Other professionals of similar rank and caliber

it's focused on management issues

Networking

Approximately What Year(s) Did You Participate in Management Division?

Approximately what year(s) did you participate in the Management Division?
2009
1993 to 1995
2000-2010
3 years
2014
2014
do not remember

What Are Some of The Principal Reasons Why You Choose to no Longer Participate in the Management Division?

#	Answer	%	Count
1	Did not enjoy the work the division was doing	13.33%	2
2	It did not make financial sense	6.67%	1
3	Did not like the leadership	0.00%	0
4	Competing interests	20.00%	3
5	Poor communication	6.67%	1
6	Did not feel a sense of community	6.67%	1
7	The topic(s) were no longer of interest	6.67%	1

What Are Some of The Principal Reasons Why You Choose to no Longer Participate in the Management Division? (con't)

#	Answer	%	Count
8	Not enough time to participate	26.67%	4
9	Disagreement with another member	13.33%	2
10	Other	0.00%	0
	Total	100%	15

What Could the Management Division do Differently or Better, That Would Encourage You to Rejoin?

What could the Management Division do differently or better, that would enc...

More conversations for entrepreneurship, ventures, investing, and management consulting

Can't think of anyhtng

Electronic newsletters are usually of interest

risk analysis in HAZOP

Stay in touch with everyone.

From the List of AIChE's Communities Below, Would Any of Them be of Interest to You?

#	Answer	%	Count
1	Catalysis and Reaction Division (CRE)	5.10%	5
2	Computing & Systems Technology Division (CAST)	3.06%	3
3	Education Division (EDU)	0.00%	0
4	Environmental Division (ENV)	7.14%	7
5	Food, Pharmaceutical & Bioengineering Division (FP & BE)	6.12%	6
6	Forest Bioproducts Division (FBP)	1.02%	1

From the List of AIChE's Communities Below, Would Any of Them be of Interest to You?

#	Answer	%	Count
7	Fuels & Petrochemicals Division (F & P)	9.18%	9
8	Materials Engineering & Sciences Division (MESD)	6.12%	6
9	Nuclear Engineering Division (NE)	4.08%	4
10	Process Development Division (PD)	4.08%	4
11	Safety & Health Division (S&H)	5.10%	5
12	Separations Divisions (SEP)	6.12%	6
13	Transport and Energy Processes Division (TEP)	7.14%	7

From the List of AIChE's Communities Below, Would Any of Them be of Interest to You?

#	Answer	%	Count
14	Chemical Engineering & the Law Forum (ChE&L)	6.12%	6
15	Computational Molecular Science & Engineering Forum (CoMSEF)	0.00%	0
16	Nanoscale Science & Engineering Forum (NSEF)	2.04%	2
17	North American Mixing Forum (NAMF)	3.06%	3
18	Particle Technology Forum (PTF)	3.06%	3
19	Pharmaceutical Engineering Forum (SEF)	6.12%	6

From the List of AIChE's Communities Below, Would Any of Them be of Interest to You?

#	Answer	%	Count
20	Upstream Engineering & Flow Assurance Forum (UE & FA)	2.04%	2
21	None of these are of interest to me	13.27%	13
	Total	100%	98

What do You Find Valuable in Joining a Professional Community or Forum?

#	Answer	%	Count
1	To be recognized professional contributions	6.49%	58
2	Exposure to new techniques and tools	21.39%	191
3	In-person training	6.94%	62
4	Online training	10.08%	90
5	To be able to contribute to conference programming	4.82%	43
6	To be published	2.35%	21
7	Making new professional contacts/networking	16.80%	150
8	Volunteering and doing service	6.16%	55

What do You Find Valuable in Joining a Professional Community or Forum?

#	Answer	%	Count
9	Publication subscription, such as an e-newsletter or magazine	8.17%	73
10	Downloadable information and resources	15.01%	134
12	None	1.23%	11
11	Other	0.56%	5
	Total	100%	893

What do You Find Valuable in Joining a Professional Community or Forum?

“Other” Responses:

Other
For updating my knowledge
I do not know where to find the content.
Knowledge sharing
Making new professional contacts that result in deals.

When asked to those who are not currently in a management role, but was looking to move into one: What do You Anticipate Some of Your Management Challenges May be?

#	Answer	%	Count
1	Managing staff based in different locations, and possibly different time zones	14.29%	25
2	Not spending enough time with each employee	12.00%	21
3	Not providing employees with adequate professional development opportunities	13.14%	23
4	Delegating tasks to subordinates	8.57%	15
5	Enforcing policies and administering policies fairly and consistently	8.57%	15

When asked to those who are not currently in a management role, but was looking to move into one: What do You Anticipate Some of Your Management Challenges May be?

#	Answer	%	Count
6	Dealing with internal conflicts	12.57%	22
7	Creating a collaborative team	9.71%	17
8	Keeping the business's evolution in mind	9.14%	16
9	Communicating effectively	11.43%	20
10	Other	0.57%	1
	Total	100%	175

What Would You Like to See a Community Like AIChE's Management Division Offer You That You Can't Get Anywhere Else?

What would you like to see a community like AIChE's Management Division off...
research training
Developing subordinates
Where is the love?
Management Consulting case studies, Startup and Investor matchmaking
Success stories from globally known chemical Engineers
not for the moment
I think that I need some honest words
International perspectives (US is a foreign country to me)
Individual membership
Networking around external innovation
Training in management but focus on industry and chemical engineering

What Would You Like to See a Community Like AIChE's Management Division Offer You That You Can't Get Anywhere Else? (Cont.)

What would you like to see a community like AIChE's Management Division offer...

Access to non European thoughts and thinking

professional development unique to chemical engineering managers

Professional training & discussion about EHS management

How to crack the nut regarding ageism.....

Exposure to New Techniques

Going to attend AIChE Ammonia Symposium in September 2017. There I will come to know more about it

Professional Recognition

Networking and Job portals for global placements

Aides for development of professionals, Knowledge retention for a transient professional staff

Blend of technical needs with professional situation in a managerial role

What Would You Like to See a Community Like AIChE's Management Division Offer You That You Can't Get Anywhere Else? (Cont.)

What would you like to see a community like AIChE's Management Division off...
I'm retired
Unsure
Yes
How i can be a good safety manager in ammonia plant
Exposure to significant advances in chemical engineering research
Resources and a safe environment to discuss sensitive topics
project management specific to AIChE members' needs
something unique
Free access to engineering reference books, project management books, spreadsheet techniques
webinars or other continuing education specific to engineers as managers
helpful ideas

What Would You Like to See a Community Like AIChE's Management Division Offer You That You Can't Get Anywhere Else? (Cont.)

What would you like to see a community like AIChE's Management Division off...
management advice
Free and unlimited access to Global Standards, journals, data base, webinars. Free Entry to Technical communities and Conferences. Access to Elite group of chemical engineers across the globe
management training in an engineering environment
update of law
Why not ?
AIChE's management division would help understand the way the industry would move/ evolve (earlier than other agencies)
Dont know well.
Not sure
Interaction and Exchange with others who are successful managers at Sr levels
Professional and relevant information / training

What Would You Like to See a Community Like AIChE's Management Division Offer You That You Can't Get Anywhere Else? (Cont.)

What would you like to see a community like AIChE's Management Division off...
An opportunity for career advancement
latest approved process in the field
Free Technical knowledge shares
New program, information & technology about syngas process
Processes to sustain team knowledge
AIChE offer material like Case Study, new method etc
Training geared toward management
Small organization - juggling act between business performance and (EHS / legal) compliance
Don't know
Don't have an opinion
Extensive and reachable knowledge.

What Would You Like to See a Community Like AIChE's Management Division Offer You That You Can't Get Anywhere Else? (Cont.)

What would you like to see a community like AIChE's Management Division off...
Training for team leaders - those that are running projects and overseeing technical work.
MORE LOCAL NETWORKING
I am nor sure. I am not currently employed.
Accountability
Not sure
What will they offer that is superior to other management tools in industry?
I don't believe that I can't get it anywhere else. But this should make it easier.
Consulting assignments and other interim employment opportunities.
No idea
Forum for chemical-related venture capital/private equity and startup investment opportunities

What Would You Like to See a Community Like AIChE's Management Division Offer You That You Can't Get Anywhere Else? (Cont.)

What would you like to see a community like AIChE's Management Division off...
Specificity to chemical engineering
Practice in management skills
possibly
N/A
exchange of knowledge / benchmarks
Technical Support
High level technical info
Job postings
not sure
yes
Network

What Would You Like to See a Community Like AIChE's Management Division Offer You That You Can't Get Anywhere Else? (Cont.)

What would you like to see a community like AIChE's Management Division off...
Support and or sharing experience
As a source of Chemical Engineering Knowledge
International recognition
Educational offerings similar to AMA which I am a member of as well
Accommodating hours
training on management
It would require a level of coordination that does not exist necessarily now, but perhaps we should have a strong connection between CEOC and this Division. CEOC holds the 5 year succession plan, and Management holds the training that is needed to move to the next succession.
Learnings from applications of solutions to management issues
Engineering management tips

Your Age Range

#	Answer	%	Count
1	18-24 years old	8.38%	30
2	25-34 years old	6.42%	23
3	35-44 years old	16.20%	58
4	45-54 years old	19.55%	70
5	55-64 years old	32.40%	116
6	65-74 years old	13.41%	48
7	75 years or older	3.63%	13
	Total	100%	358

Highest Degree Held

#	Answer	%	Count
1	High school	1.97%	7
2	Associate	0.00%	0
3	Bachelor	46.91%	167
4	Master's	36.24%	129
5	Doctorate	14.33%	51
6	Other	0.56%	2
	Total	100%	356

What Best Describes Your Job Title?

#	Answer	%	Count
1	C-level (CEO, CTO, etc.)	2.22%	8
2	President	1.39%	5
3	Vice President	2.50%	9
4	Senior Director/Director	8.06%	29
5	Senior Manager/Manager	38.89%	140
6	Supervisor/Team Leader	10.83%	39
7	Engineer	18.89%	68
8	Professor	0.83%	3
9	Researcher	2.22%	8

What Best Describes Your Job Title? (Cont.)

#	Answer	%	Count
10	Student	2.50%	9
11	Other	11.67%	42
	Total	100%	360

Which of The Following Research Areas or Industry Sectors Best Describe Your Work?

#	Answer	%	Count
1	Aerospace/ Aeronautics/ Astronautics	0.28%	1
2	Agricultural Chemicals	3.64%	13
3	Alternative Energy Sources	1.40%	5
4	Automotive	0.84%	3
5	Biotechnology/ Life Sciences	4.20%	15
6	Catalyst	1.12%	4
7	Commodity Chemicals	4.20%	15
8	Specialty Chemicals	10.92%	39

Which of The Following Research Areas or Industry Sectors Best Describe Your Work? (Cont.)

#	Answer	%	Count
9	Electronics/ Computers	1.68%	6
10	Engineering/ Design/ Construction/ Consulting	14.01%	50
11	Environmental Engineering	3.08%	11
12	Equipment Manufacturing	1.68%	6
13	Foods and Beverages	2.80%	10
14	Forest Products/ Pulp and Paper	0.56%	2
15	Industrial Gases	1.40%	5
16	Materials and Composites	0.84%	3

Which of The Following Research Areas or Industry Sectors Best Describe Your Work? (Cont.)

#	Answer	%	Count
17	Metals/ Metallurgical Products/ Minerals Processing	1.40%	5
18	Natural Gas	1.96%	7
19	Nuclear Energy and Allied Fields	1.40%	5
20	Oilfield Services and Exploration	0.84%	3
21	Paints and Coatings	0.84%	3
22	Petrochemicals and Petroleum Products	7.84%	28
23	Petroleum Production/ Refining	10.08%	36

Which of The Following Research Areas or Industry Sectors Best Describe Your Work? (Cont.)

#	Answer	%	Count
24	Pharmaceuticals	3.64%	13
25	Plastics and Rubber Products	2.24%	8
26	Research & Development (R&D)	5.04%	18
27	Other	12.04%	43
	Total	100%	357

Which of The Following Research Areas or Industry Sectors Best Describe Your Work?

“Other” Responses:

Other
Law Enforcement
water desalination
Semiconductor
E&P
Process Safety
None
retired
Automation
Software consulting
Utilities
Water & Wastewater

Which of The Following Research Areas or Industry Sectors Best Describe Your Work?

“Other” Responses:

Other
Test & Evaluation
retired
Risk and legal
Financial Services
IT projects
Risk Engineering
Consulting
consumer products and goods
Consumer goods
Higher Education
Retired

Which of The Following Research Areas or Industry Sectors Best Describe Your Work?

“Other” Responses:

Other
Biotechnology
Medical Devices
Unemployed
Cosmetics and Personal Care
Law Enforcement
R&D Facilites Mgmt
Servicing Refining and Petrochemical
Currently Unemployed
Membrane Separations
Law

Do You Have an MBA or Other Management Degree?

#	Answer	%	Count
1	Yes, I have an MBA	13.69%	33
2	No, I do not have an MBA	78.01%	188
3	Other management degree	8.30%	20
	Total	100%	241

Do You Have an MBA or Other Management Degree?

“Other Management Degree” Responses:

Other management degree
PhD
Engineering Management
Engineering Management
Bachelor's in Management
MBA through Distance learning
MBA in process
Master in Project Management
Accelerated MBA sponsored by my employer
DBA in-view
Masters Engrg Mgmt

How Many AIChE National or Local/Regional Meetings Have You Attended Over the Last 5 Years?

#	Answer	%	Count
1	0	62.22%	224
2	Between 1 - 3	23.06%	83
3	Between 4-6	6.94%	25
4	7 or more	7.78%	28
	Total	100%	360

Which AIChE Meetings do You Typically Attend?

#	Answer	%	Count
1	Spring Meeting and Global Congress on Process Safety	21.71%	38
2	Annual Meeting	22.86%	40
3	Local Section Events	31.43%	55
5	Regional Meetings	17.71%	31
4	Other	6.29%	11
	Total	100%	175

Which AIChE Meetings do You Typically Attend?

“Other” Responses

Other
Forum
TSC
Ammonia Safety Symposium
DiERS Users Group

What Are Your Preferred Communication Methods?

#	Answer	%	Count
1	Email	72.26%	349
2	Direct mail	7.45%	36
3	Social media	6.42%	31
4	Phone call	7.25%	35
5	Text message	6.21%	30
6	Other	0.41%	2
	Total	100%	483

What AIChE Outlets do You Follow and/or Participate in?

#	Answer	%	Count
1	AIChE's e-newsletter, AIChExchange	32.79%	202
2	AIChE's Facebook page, AIChE ChEnected	3.08%	19
3	AIChE's Twitter, @ChEnected	1.46%	9
4	AIChE's LinkedIn group	10.55%	65
5	AIChE's online community, Engage	6.98%	43
6	AIChE's blog, ChEnected	3.25%	20
7	AIChE's volunteering opportunities	2.92%	18

What AIChE Outlets do You Follow and/or Participate in? (Cont.)

#	Answer	%	Count
8	AIChE's Academy education and training resources	6.33%	39
9	AIChE's Young Professionals Committee	1.46%	9
10	Specialty Divisions, such as Center for Chemical Process Safety (CCPS) or Center for Energy Initiatives (CEI)	8.60%	53
11	AIChE's divisions and forums	8.44%	52
12	None	13.31%	82
13	Other	0.81%	5
#	Answer	%	Count
	Total	100%	616

Question Repository

Are you a current AIChE Member?	Are you currently in a management role?	How many people do you currently manage?	What are some of your management challenges?	Are you familiar with one of the AIChE's communities, the Management Division?
What attracted you to become a member of the management division?	Approximately what year(s) did you participate in management division?	What were some of the principal reasons why you choose to no longer participate in the Management Division?	What could the management division do differently or better, that would encourage you to rejoin?	From the list of AIChE's communities below, would any of them be of interest to you?
What do you find valuable in joining a professional community or forum?	What do you anticipate some of your management challenges may be?	What would you like to see a community like AIChE's Management Division offer you that you can't get anywhere else?	Your age range?	Highest Degree Held?
What best describes your job title?	Which of the following research areas or industry sectors best describe your work?	Do you have an MBA or other management degree?	How many AIChE national or local/regional meetings have you attended over the last 5 years?	Which AIChE meetings do you typically attend?
What are your preferred communication methods?	What AIChE outlets do you follow and/or participate in?			