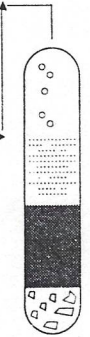


AIChESM Chicago Columns

Chicago Section
American Institute of Chemical Engineers
www.aiche-chicago.org



November Meeting Notice

Wednesday, November 8, 2000
Wellington of Arlington
2121 South Arlington Heights Road
Arlington Heights, IL 60005
Phone: (847) 439-6610

Agenda

Cash Bar: _____ 5:30-6:00pm
Dinner: _____ 6:00-7:30pm
Speaker - Dr. Summers _____ 7:00 - 8:00 pm

Dinner Menu

- ♦ New York Strip with twice baked potato or Chicken Ala Wellington (breast of chicken in wine sauce) with rice
- ♦ Vegetarian plates provided on request (limited number available)
- ♦ Soup, salad, vegetable of the day, coffee, and dessert

Cost

\$22 _____ for members
\$24 _____ for non-members
No charge for AICHe Student Chapter Members
(See your advisor.)

*Make your reservations by calling
(847) 647-1347 or e-mailing
evalopez@teianalytical.com by Wednesday,
November 12, 2000 before 12:00 noon.*

If you cannot attend after making a reservation, please find someone to take your place. A credit card (Visa or MasterCard) is required to secure your reservation. No shows will be charged. *Note that this is a new policy.*

Joint AICHe/ISA Meeting IEC 161511 and ISA S84 Safety Standards Update

Got SIL?

In March 2000, ANSI/ISA S84.01-1996 (S84) was recognized by OSHA as good engineering practice. Compliance with S84 requires that the User a) determine whether a safety instrumented system (SIS) is needed; b) assign the safety integrity level (SIL) required to reach the tolerable risk; and c) design the SIS to meet the SIL.

Now, assuming that the SIL assignment team has met, documented, and delegated, what do you do? You have five parameters to work with: device selection, architecture, testing frequency, common cause factors, and diagnostic coverage. These choices affect not only the SIL, but also the spurious trip rate for the safety instrumented system. These choices affect the capital cost and the long-term operation and maintenance cost. Project budgets versus manpower constraints. Safety availability versus spurious trips.

Got SIL?.....Choose wisely.

About the Speaker

Dr. Angela Summers is President of SIS-TECH Solutions, LLC, specializing in safety instrumented system assessment and design. Angela is a member of the international IEC 61511 committee and the US ISA S84 committee. Angela has taught courses on SIS assignment, verification and design to over 1750 process industry representatives worldwide.

Angela Summers has a Ph.D. in Chemical Engineering from The University of Alabama and a Masters of Engineering in Environmental Systems Engineering from Clemson University.

She is a licensed Professional Engineer in the State of Texas and an Adjunct Professor in the Environmental Management department at the University of Houston-Clear Lake.

Directions to Wellington of Arlington

From the Northeast

Go west on Lake Cook Rd., Dundee Rd., or Willow/Palatine Rd. to Arlington Heights Rd. South. The Wellington is three blocks south of Rt. 58 (Golf Rd.).

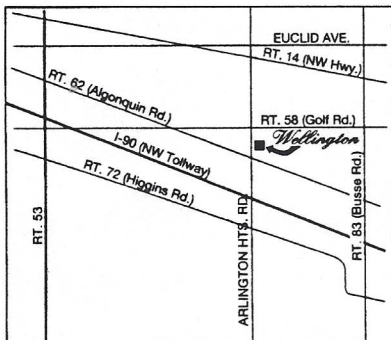
or
take the Tri-State (I-294) south to Rt. 58 (Golf Rd.). Go west to Arlington Heights Rd., and then south three blocks.

From Downtown Chicago or from the Southeast

Take the Kennedy or the Tri-State (I-294) to the Northwest Tollway (I-90). Exit Arlington Heights Rd. North. The Wellington is three buildings past the light, on the right.

From the Southwest

Take I-355 north to Rt. 53 north to Algonquin Rd. east to Arlington Heights Rd. north. The Wellington is the third building to the north, on the right.



Chairman's Corner

Suzette Wick, Dedert Corp.
Chair 2000-2001
Chicago Section AIChE

As some of my AIChE friends know, I really enjoy watching NASCAR stock car racing on Sunday afternoons. I have a favorite driver, like most race fans. But when my favorite driver makes it to the winner's circle, I know that it is because he has dozens of hard-working, bright people on his team. These team members each have a significant job to do, and it is their work that may determine if the driver finishes first or doesn't finish at all. This is also the case with our AIChE organization. While one person may briefly hold the spotlight, there are many hours of work done by the team to make our Section a success.

Also like professional race teams, our Section needs sponsorship. Without funding, our programs will be stuck in the pits. Sponsorship can take many forms. It may be like CP Hall, who has graciously allowed us to hold our Board meetings at its Bedford Park and 311 S. Wacker offices (special thanks to George Vincent, CEO, who stayed late for us). It can also be like Kraft, who provided the facility for a tour and a speaker at our October meeting. Sponsorship is certainly appreciated in the form of funds to help with our many events through the year. Like a racecar, we will proudly display the name of our sponsor at the meeting or event of the company's choice. My point is that we appreciate all the support that is offered and really need much more. Please consider asking your company to sponsor one of our events this year.

On a sad note, I would like to express my deepest sympathies to the family of Lisa Alexander. Lisa, one of our editors, passed away in September. She will be missed.

Free Meals

That's right.....we are still offering a free local section meal (and meeting) for every school visit completed. It's easy. Here's what you do:

Get a school to visit. Contact Annette Johnston at Annette.Johnston@abbott.com for a school, or contact a school that is convenient for you. If you don't know which teacher to talk to, discuss it with the principle, or the science department head if available. They will give you the name of a teacher to contact. Tell the teacher you are interested in showing their students what chemical engineers do. You will provide a brief introduction about yourself, a short (20 min) presentation/activity, and some discussion about chemical engineering careers. The idea is to help the students picture themselves in your job.

Set a date. I think you will find that your supervision or will support a morning or afternoon off for this activity. This is particularly true if they will give you company stuff to give away at the school. Why not make a good impression early on the future workforce?

Get a speaker's kit, and plan for your activity. Contact Alan Zagoria at (847)375-7335 for a copy. It is also available on our website at the student outreach page: (www.aiche-chicago.org/student_outreach.htm).

Visit the School. Fill out the feedback form in the speaker's kit, and return it to Annette Johnston. You will then eat for free at AIChE!

You never know whom you will influence in one of these visits. It is worthwhile. Even if no children in the room choose to become engineers, you may have influenced their opinions of what engineers do and who they are.

New Policy for Meeting Reservations

You may have noticed that there is a new policy for meeting reservations. Over the last year the Section has lost several hundreds of dollars over because of "no-shows". We apologize for the inconvenience of this new policy, but we must guarantee our reservations to the restaurant several days in advance. You are welcome to continue to pay by cash or check at the meeting instead of charging the meeting to your card. However we will need a card to secure your reservation.

Nominations Requested for the Ernest W. Thiele Award

The Ernest W. Thiele award is sponsored by BP Amoco and recognizes the outstanding contributions to our profession by a Midwest region chemical engineer. This award was established by the AIChE Chicago Section and is presented annually to a Midwest region AIChE member. This internationally recognized award consists of an engraved plaque and \$1000 honorarium.

Nomination forms and additional information can be obtained from the Thiele Committee Chair: Completed nominations are due to the committee chair no later than March 30, 2001.

Jim Simnick
BP Amoco Complex, J-8
150 W. Warrenville Road
Naperville, IL 60566
Ph 630-420-5936
fax 630-420-4832
email: simnicji@bp.com