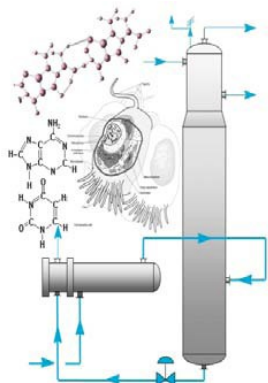


October Newsletter



Inside this issue:

Chair's Corner	2
October Meeting Info	3
AIChE Live Webinars	4
Upcoming Meetings	5
AIChE Midwest Regional Conference	5
Young Professionals	5
Ten Signs of job dissatisfaction	7
C2ST Meeting Information	8
What is New	9
Thiele Award	9
High School Program at 2013 MWRC	10

AIChE Chicago October 2012 Meeting Notice

Blind Spots: The 10 Business Myths You Can't Afford to Believe on Your New Path to Success,

By: **Alexandra Levit**
Business & Workplace Author,
Speaker, and Consultant



Date: **Wednesday, October 10th, 2012**

Location: **La Tasca Tapas Restaurant**

25 W. Davis Street, Arlington Heights, IL 60005

Cost: **Members: \$35 Non-Members: \$40**

Students: \$5 Unemployed Members: \$20

To Register Click the Link;

<http://www.cvent.com/d/tcqx2l/4W>

Agenda

Meeting registration	5:30 pm
Alexandra's Pre-Meeting Event: How to start a Successful Career	6:00—6:45 pm
Dinner	6:45 - 7:30 pm
Section business	7:30 - 7:45 pm
Speaker	7:45 - 8:45 pm
Meeting close	8:45 pm

Chair's Corner

Being an asset to the organization for which you work first means understanding how to plan your career smartly. Adopting tactics in the business environment that are beneficial to the individual, but threaten workplace efficiency, is taking a path that can lead to either personal dissatisfaction or career strangulation. In the long run, neither state helps the organization. Yet somehow over the years the myth has become widespread that “win at all costs” is the only way to play the game.

The section meeting this month offers a refreshing diversion from technical topics in that the discussion is how to avoid common workplace myths so you can strengthen your career. Our speaker, Alexandra Levit, has written numerous career guidance books and has been featured on MSNBC, Forbes and Money magazine. She is a renowned consultant on workplace trends, and has spoken at a corporate level to S&P 500 giants such as Microsoft, ExxonMobil and Whirlpool on ways those companies can get the most of ALL their employees – and retain them in the process!

This month also includes a special deal –those college students and AIChE “Young Professionals” who sign up early and attend the meeting will receive a copy of Alexandra’s latest book, [Blind Spots](#). For all other members, we’re using this opportunity to kick off our AIChE Chicago Student Grant program where we’re offering \$500 scholarships to select chemical engineering students in the area. Donate \$20 or more to our scholarship program and you’ll receive a copy of [Blind Spots](#) for

yourself, a friend or family member. A donation option is on the [monthly meeting registration page](#). For more information on the scholarship program contact aichechicago@gmail.com.



Peter Hereña

Call for Volunteers

Volunteers are needed to help plan and support the Midwest Regional Conference.

For those interested in volunteering on the [General Arrangements Committee](#) (<http://www.aiche.org/conferences/2013midwest/GAC.aspx>), please contact the conference chair: Donald Chmielewski, chmielewski@iit.edu

2012 AIChE Annual Meeting

Cleaner Energy, Stronger Economy, Better Living

October 28 - November 2, 2012

**David L. Lawrence Convention Center,
Pittsburgh, PA**

The AIChE Annual Meeting is the premier educational forum for chemical engineers interested in innovation and professional growth. A wide range of subjects relevant to latest research and newest technologies in emerging growth areas will be covered.

October Meeting Information

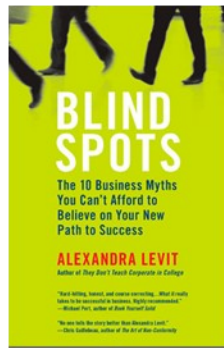
Abstract

Blind Spots: The 10 Business Myths You Can't Afford to Believe on Your New Path to Success,

This presentation will offer guidance on how to survive and thrive in a post-recessionary business climate that eschews controversy, office politics, and quick promotions and is returning to an emphasis on traditional workplace values like trust and direct communication. Business myths (and their realities) in 2012 we will address include: Employers want you to be yourself, being good at your job trumps everything, it's best to climb the ladder as fast as possible, the problem isn't you but the organization, and controversy will propel your career.

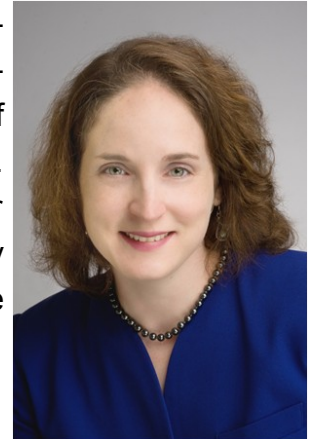
Speaker's Bio

Alexandra Levit's goal is to help people succeed in meaningful jobs, and to build relationships between organizations and top talent. A former nationally syndicated columnist for the Wall Street Journal and a current writer for the New York Times, Alexandra has authored several books, including the bestselling *They Don't Teach Corporate in College*, *How'd You Score That Gig?*, *Success for Hire*, *MillennialTweet*, *New Job, New You*, and *Blind Spots*.



Since serving as a member of Business Roundtable's Springboard Project, which advised the Obama administration on current workplace issues, Alexandra produced the critically acclaimed JobSTART 101, a free online course

that better prepares college students and graduates for the challenges of the workplace, and a U.S. Department of Labor course that helps military veterans transition to the civilian workforce.



Alexandra consults, writes, and explores leadership development, career and workplace trends on behalf of Microsoft, American Express, Intuit, and DeVry University. She has spoken at hundreds of organizations around the world including the American Management Association, the Federal Reserve Bank, Campbell Soup, McDonalds, and Whirlpool.

Alexandra is also a frequent national media spokesperson and is regularly featured in outlets including the New York Times, USA Today, National Public Radio, CNN, ABC News, CNBC, Forbes, the Associated Press, and Glamour. She was recently named Money Magazine's Online Career Expert of the Year and the author of one of Forbes' best websites for women.

A member of the Northwestern University Council of 100 and the Young Entrepreneur Council, Alexandra just received the prestigious Emerging Leader Award from her alma mater. The award honors a Northwestern graduate under 35 who had made a significant impact in her field and in society. She resides in Chicago, IL with her husband Stewart and their two young children.

AIChE National's Live Webinars in October

Marcellus Shale Gas Wastewater Re-use and Recycle

AIChE Webinar

Wednesday, October 3, 2012 - 2:00pm-3:00pm

Presenter(s): Jessica Gray

This webinar provides background on how water is used for drilling and hydraulic fracturing and includes a review of hydraulic fracturing fluid composition and flowback and produced water quantity and composition

Working Across Distances: The Challenge of Global Teams

AIChE Webinar

Wednesday, October 17, 2012 - 2:00pm-3:00pm

Presenter(s): Henry Kohlbrand

Teamwork can be challenging, especially when a project involves people in multiple locations or time zones, and of various cultural backgrounds. This webinar lays the groundwork for practicing effective global teamwork when working across cultures and/or distances.

New Books

Guidelines for Evaluating Process Plant Buildings for External Explosions, Fires, and Toxic Releases, 2nd Edition

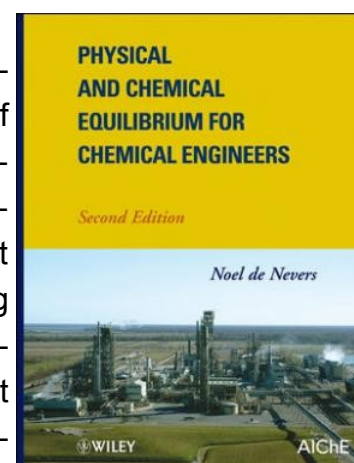
Siting of permanent and temporary buildings in process areas requires careful consideration of potential effects of explosions and fires arising from accidental release of flammable materials.



Physical and Chemical Equilibrium for Chemical Engineers, Second Edition

This book concentrates on the topic of physical and chemical equilibrium. Using the simplest mathematics along with numerous numerical examples it accurately and rigorously covers physical and chemical equilibrium in depth and detail. It continues to cover the topics found in the first edition however numerous updates have been made including: Changes in naming and notation (the first edition used the traditional names for the Gibbs Free Energy and for Partial Molal Properties.

This edition uses the more popular Gibbs Energy and Partial Molar Properties,) changes in symbols (the first edition used the Lewis-Randal fugacity rule and the popular symbol for the same quantity, this edition only uses the popular notation,) and new problems have been added to the text. Finally the second edition includes an appendix about the Bridgman table and its use.



Upcoming Meetings

2012 AIChE Regional Process Technology Conference

South Shore Harbour Resort and Conference Center
League City, TX

October 4-5, 2012

Chicago Section October Meeting

La Tasca Tapas Restaurant, Arlington Heights

October 12, 2012

2012 Annual Meeting

Pittsburgh Convention Center
Pittsburgh, PA

October 28—November 2, 2012

Sustainability in (Bio) Pharmaceuticals

Sheraton Old San Juan, San Juan Puerto Rico

November 11-14, 2012

Young Professionals News

YPAB will be having an outreach event at the 2012 **Family Science Expo**, which will be held Saturday, **October 13, 2012 from 12–4 p.m.** at the Des Plaines Public Library. The target group is elementary school and middle school students. We would like to have a few more volunteers for this event; please contact Tiffany Parrott at tparrott@valdeseng.com if you are interested in participating.

AIChE

2013 Midwest Regional Conference

Scientific Research **Connecting to a Sustainable Future** Professional Practice

Student Outreach

AIChE Chicago ILLINOIS INSTITUTE OF TECHNOLOGY AIChE IIT

CALL FOR TECHNICAL CONTRIBUTIONS

2013 AIChE Midwest Regional Conference

January 31—February 1, 2012

Organized by the Chicago Local Section of AIChE

Hosted by the Illinois Institute of Technology, Chicago, IL

The “Call for Technical Contributions” for the [2013 AIChE Midwest Regional Conference](#) is now open:

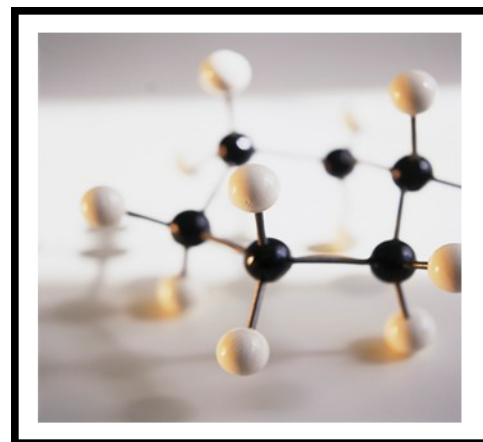
<http://www.aiche.org/conferences/midwest-regional-conference/2013/call-technical-contributions>

Contributions are sought in all areas of chemical engineering.

Professional Development contributions are also encouraged.

Contributions may be in the form of:

- **Invited Sessions**
- **Contributed Presentations**
- **Poster Presentations**



For those interested in organizing an Invited Session please see the “Intent to Submit an Invited Session” form.

For questions, please feel free to contact a member of the [Meeting Program Committee](#).

<http://www.aiche.org/conferences/midwest-regional-conference/2013/meeting-program-committee>

Ten Signs of Job Dissatisfaction Don't Ignore Them!

Are you completely happy with your current job? If not, now is a great time to analyze your job satisfaction. There are ten sure signs that you are experiencing job dissatisfaction. If you:

1. Dread Mondays or coming to work
2. Can't wait for Friday
3. Are often bored at work
4. Feel tired or chronically fatigued
5. Avoid your boss and dread meetings
6. Have no enthusiasm or sense of self-worth
7. Feel like you are getting nowhere in your job
8. Take work stress home
9. Question your choice of industry or occupation
10. Can't think of a way out

Any of the above signs indicate a need for change. The biggest career mistake is to ignore those indicators. A head-in-the-sand mentality can lead to a downward career spiral that ends with disappointment and what if regrets.

Here are three great ways to facilitate positive change.

- **Analyze your career choice.**

Is the problem your boss or employer or is it that you have chosen the wrong occupation? Before you take any action, make sure you know what needs to change.

Don't make the mistake of throwing away a good career (ex. accounting, sales, finance) when the problem is really the person you work for. On the flip side, if you're not cut out for sales, then changing employers isn't going to help the problem.

A career coach can guide you to determine which of these problems is causing your unhappiness and give you ideas for your next career move.

- **Update your resume.**

Updating your resume can give you a great confidence boost. You'll feel better immediately if you know you are ready whenever opportunity knocks.

Be careful, however, that your resume doesn't resemble a house with too many additions, each resembling a different style. If you have simply added to the same old resume job after job, it's time to tear down that old shack and rebuild your resume from the ground up.

If your old resume format doesn't live up to your professional image, you may want to consult a resume coach. You'd never wrap a ruby ring in old newspaper, and you should never present your career with anything less than professional polish.

- **Brush up your interview skills.**

If you have been on the job for a couple of years, your interview skills are probably rusty. Don't make the mistake of blowing off the first few interviews as practice. They might be the

Ten Signs of Job Dissatisfaction Don't Ignore Them!

perfect jobs for you!

You'll feel much more confident and comfortable if your interview skills are honed before you step into the first interview. To determine your current level of interview expertise, answer the following questions:

- Do you know the toughest interview questions and how to answer them?
- Can you answer the salary question without compromising the level of starting salary at offer time?
- Can you recognize the most common interview styles and respond without showing stress?

If you aren't sure, then it may be time to visit with a career coach who can help you prepare to WOW them in every interview.

Job dissatisfaction is an indication of needed change. Take the steps of change by investing in the appropriate job-search skills and tools, and you will be in a position to change your job and your life for the better.

~~~~~  
Deborah Walker, Certified Career Management Coach

Read more career tips and see sample resumes at:

[www.AlphaAdvantage.com](http://www.AlphaAdvantage.com)

email: [Deb@Alphaadvantage.com](mailto:Deb@Alphaadvantage.com)

360-260-4965

Twitter: <http://twitter.com/DebWalkerCCMC>



### CHICAGO COUNCIL ON SCIENCE AND TECHNOLOGY

**What:** Chicago Council on Science and Technology Networking Event

**Where:** *Peggy Notebaert* Nature Museum, 2430 N. Cannon Drive in Lincoln Park (just North of the Lincoln Park Zoo), Chicago

**When:** *Thursday, November 1, 2012*, from 5:30 pm to 7:30 pm

Come join C2ST, Illinois Science Technology Coalition (ISTC), Illinois Science Teachers Association (ISTA), the ARCS Foundation, and the Illinois Science Council (ISC) in an informal interactive showcase of initiatives and opportunities ongoing in the Science and Technology community. You will have the opportunity to mingle and socialize, while enjoying the ambiance of the Notebaert Nature Museum and the Judy Istock Butterfly haven, a 2,700 square foot greenhouse that holds over 1,000 butterflies from 75 species.

**\$ 15 Non-Members**

**Free for Members of any of the organizations listed above.**

Have a friend who is thinking about joining C2ST? This is a perfect opportunity to bring them along and show them what the organization is about. If they choose to join that evening, their attendance fee will be applied towards the cost of membership.



## What is New?

### Chemical engineering ranks highly in pay among bachelor's degrees

The median yearly pay for people with bachelor's degrees in chemical engineering is \$80,000, according to a new ranking. Chemical engineering degrees rank fourth among 25 majors selected, with a median yearly pay nearly \$30,000 per year above that for the 25 fields combined. [CBS MoneyWatch](#)

### Report: Biotech revenue, spending on R&D rose in 2011

Biotech companies, on average, generated \$76 million in revenues last year, up 24% compared with 2010, according to a report from consulting firm BDO USA. On average, research and development spending grew to \$50 million from

about \$47 million in 2010. Major biotechs with revenues surpassing \$50 million reported a 33% increase in revenue, but smaller biotechs reported a 12% decline. [PharmaTimes \(U.K.\)](#)

### Researchers get NSF grants for study of ethanol-based fuel cells

A team of scientists led by Xiaowei Teng, an assistant professor of chemical engineering at the University of New Hampshire, has landed two National Science Foundation grants worth almost \$1 million to improve the efficiency of ethanol-based fuel cells. Although hydrogen is a more common choice for fuel cell oxidation, ethanol has its advantages, Teng said. Ethanol is less toxic than other fuels and can be obtained from a variety of renewable sources, he noted. [Mass High Tech \(Boston\)](#)

## NOMINATIONS REQUESTED FOR THE ERNEST W. THIELE AWARD

The Ernest W. Thiele award is sponsored by BP and recognizes the outstanding contributions to our profession by a Midwest region chemical engineer. This award was established by the AIChE Chicago Section and is presented annually to a Midwest region AIChE member. This internationally recognized award consists of an engraved plaque and \$1000 honorarium presented at our sectional meeting.

**Nomination forms and additional in-**

**formation can be obtained from the Thiele Committee Chair. Completed nominations are due to the committee chair no later than March 1, 2013.**

One of the highest honors a distinguished chemical engineer can receive is our Chicago Section Thiele award. Please consider nominating a deserving engineer for this prestigious award.

### Jim Simnick

BP Amoco Complex, J-8

150 W. Warrenville Road, Naperville, IL 60566

Ph 630-420-5936, fax 630-420-4832

email: [james.simnick@bp.com](mailto:james.simnick@bp.com)



The American Institute of Chemical Engineers  
and the Illinois Institute of Technology  
present:

## **Becoming an Engineer —Creating a World That Works!**

### **SAVE THE DATE!**

Choose one of the following dates:

**Thursday, January 31<sup>st</sup> OR Friday, February 1<sup>st</sup>, 2013**

**Only 200 student slots per day and they go fast  
so reserve one today!**

#### **Program to include:**

- **Chemical Engineering in Space**
- **Electric Car and Robotics Demonstrations**
- **Smart Grid and Medical Imaging Center tours**
- **Lunch with Engineering Professionals**

#### **To reserve a slot, please contact:**

Jessica Jaskolka  
HS Program Coordinator  
Email: [jjaskolk@iit.edu](mailto:jjaskolk@iit.edu)  
Phone: 224.383.5924

Professor Donald Chmielewski  
Conference Chair  
Email: [chmielewski@iit.edu](mailto:chmielewski@iit.edu)  
Phone: 312.567.3537



### Officers and Contact Information

|                   |                                                                                                 |
|-------------------|-------------------------------------------------------------------------------------------------|
| Chair             | Peter Herena<br><a href="mailto:pgherena@yahoo.com">pgherena@yahoo.com</a>                      |
| Chair Elect       | Jerry Wilks<br><a href="mailto:gwilks@citgo.com">gwilks@citgo.com</a>                           |
| Chair Programming | Mike Buettner<br><a href="mailto:Mike.Buettner@alfalaval.com">Mike.Buettner@alfalaval.com</a>   |
| Secretary         | Steve Wozniak<br><a href="mailto:Steven.Wozniak@honeywell.com">Steven.Wozniak@honeywell.com</a> |
| Treasurer         | Jessica Swary<br><a href="mailto:Jessica.Swary@pgcorp.com">Jessica.Swary@pgcorp.com</a>         |
| Newsletter Editor | Azita Ahmadzadeh<br><a href="mailto:azita.ad@gmail.com">azita.ad@gmail.com</a>                  |
|                   | Janet Chu<br><a href="mailto:Janet.lily.chu@gmail.com">Janet.lily.chu@gmail.com</a>             |

### Directors at Large

|                                                                                                  |                                                                                    |
|--------------------------------------------------------------------------------------------------|------------------------------------------------------------------------------------|
| Annette Johnston<br><a href="mailto:Annette.Johnston@abbott.com">Annette.Johnston@abbott.com</a> | Jeff Umbach<br><a href="mailto:jumbach@ambitech.com">jumbach@ambitech.com</a>      |
|                                                                                                  | Jenn Guilfoyle<br><a href="mailto:guilfojm@middough.com">guilfojm@middough.com</a> |

## AICHE CHICAGO SECTION

### American Institute of Chemical Engineers

Chicago Section  
13964 Doral Lane  
Homer Glen, IL 60491  
[aichechicago@gmail.com](mailto:aichechicago@gmail.com)

We are on the web  
[www.aiche-chicago.org](http://www.aiche-chicago.org)

## We want you for AIChE-Chicago!

## We need your help!

How many opportunities can you find to learn project management, delegation and leadership skills for free? Becoming an officer in the Chicago Section of AIChE is such an opportunity. While you're learning new skills, your local network grows. Just about all of us are either undergoing a career change, contemplating a career change, or are wondering if our career will be changed for us. Volunteering with AIChE is a way to add skills and accomplishments to your resume.

[aichechicago@gmail.com](mailto:aichechicago@gmail.com)

[http://www.aiche-chicago.org/Section\\_Info/Volunteer.html](http://www.aiche-chicago.org/Section_Info/Volunteer.html)

## Submitting Articles to AIChE Columns

We welcome email submissions for our monthly newsletter. Commercial announcements are subject to the fee schedule below. News stories, editorials, technical or career related non-commercial contributions are always welcome with no charge. We consider job postings, announcements of for-fee training courses, expositions, conferences as commercial. Categorization of announcements is at the sole discretion of the Chicago AIChE Board of Directors. Chicago AIChE may publicize activities of interest to our members by cooperating professional societies and other non-profits without charge.

Please submit your material to [aichechicago@gmail.com](mailto:aichechicago@gmail.com) with "newsletter article" as a subject line.

| AICHE Publicity Committee Fees | Academic (non-AICHE)                                                                           |          | Company   |          | Recruiters |          |
|--------------------------------|------------------------------------------------------------------------------------------------|----------|-----------|----------|------------|----------|
|                                | Per Month                                                                                      | Per Year | Per Month | Per Year | Per Month  | Per Year |
| <b>Advertisements (3X3)</b>    | 100                                                                                            | 450      | 150       | 675      | N/A        | N/A      |
| <b>Half-Page (~7"x 4.5")</b>   | 280                                                                                            | 1260     | 420       | 1890     | N/A        | N/A      |
| <b>Job Posting (Size?)</b>     | 50                                                                                             | 225      | 100       | 450      | 250        | N/A      |
| <b>Special Sizing</b>          | Contact Publicity Committee <a href="mailto:aichechicago@gmail.com">aichechicago@gmail.com</a> |          |           |          |            |          |

For the purchase of a year ad, customers have the option of changing ads/jobs month to month.

Student and AIChE Member Related Postings are Free.

