



**Strongsville Fire Department Station #1, Mike Daymut Community Room**







**Michael Galgoczy, P.E., CLE AIChE Chair introducing our speaker Gurmukh Bhatia, CPSA**



**Gurmukh Bhatia, CPSA; President of Risk and Process Safety Consulting, RPSC, LLC**



**Attendees for CLE AIChE Seminar 3 of 3 on Process Safety Fundamentals**







**Attendees for CLE AIChE Seminar 3 of 3 on Process Safety Fundamentals**





**Attendees for CLE AIChE Seminar 3 of 3 on Process Safety Fundamentals**





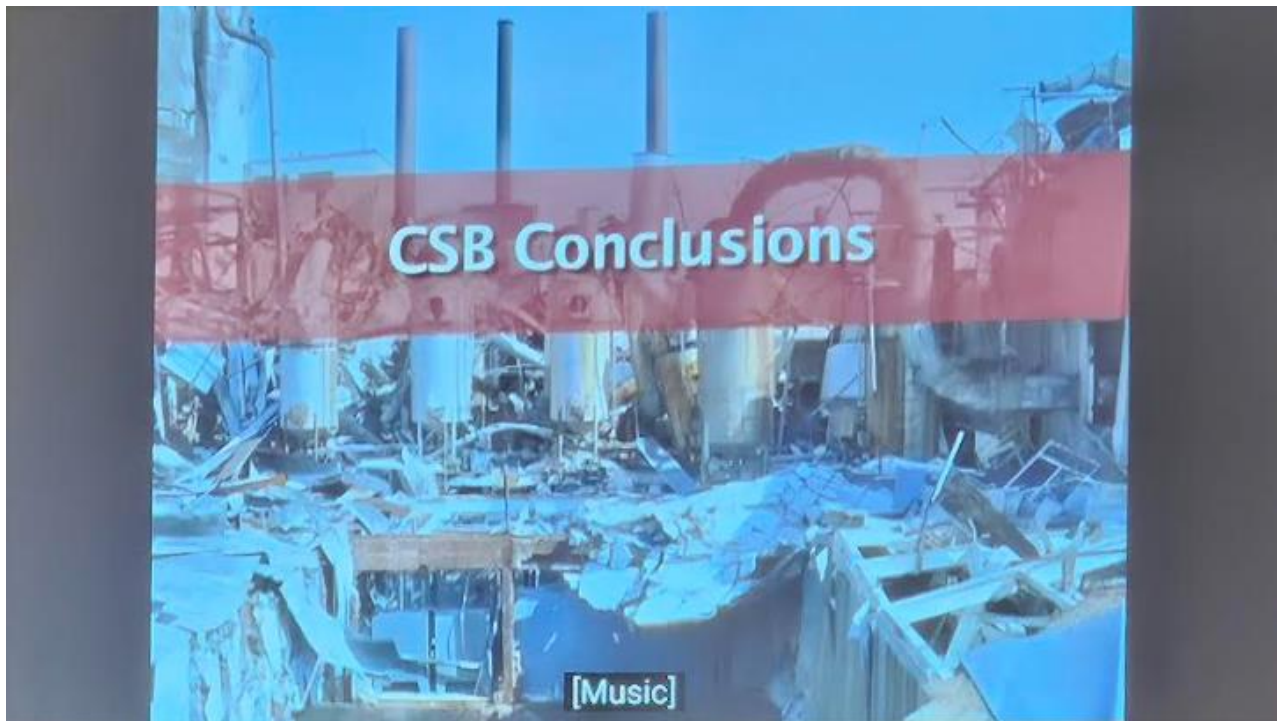


**Imperial Sugar Company dust explosion example for Process Safety Management**



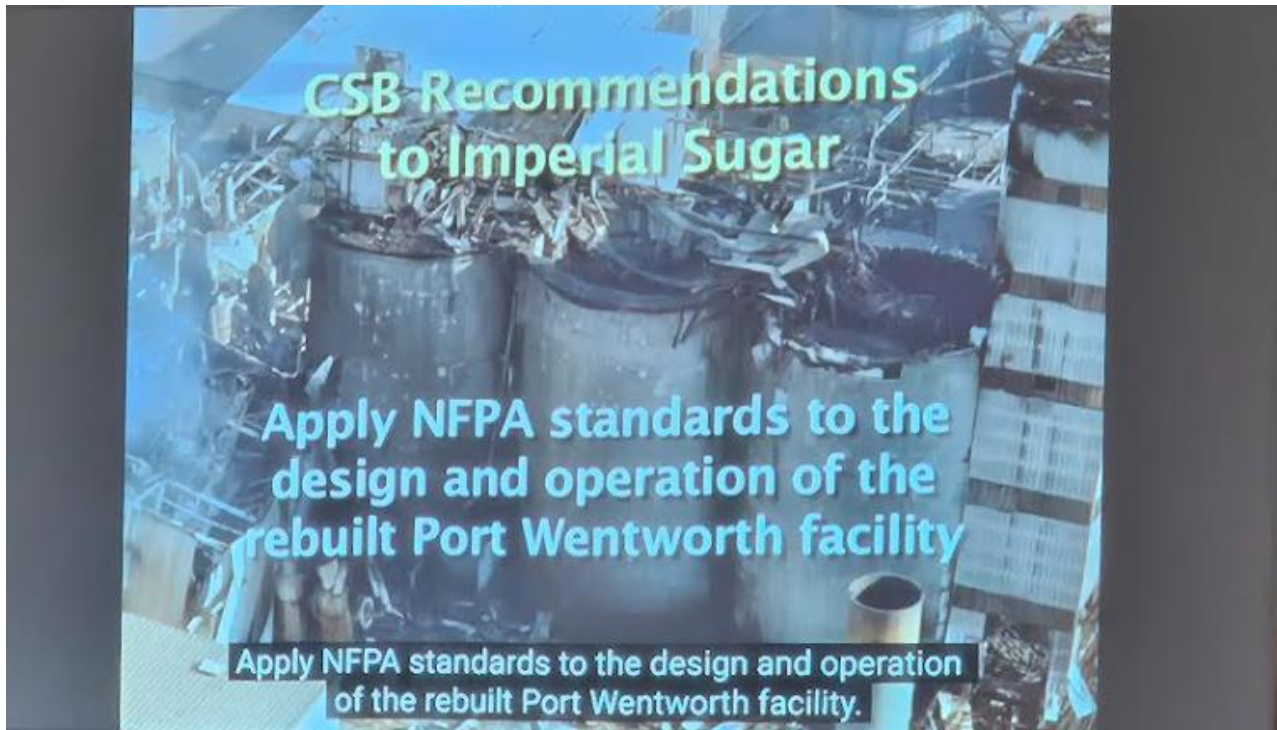


**Imperial Sugar Company dust explosion example for Process Safety Management**

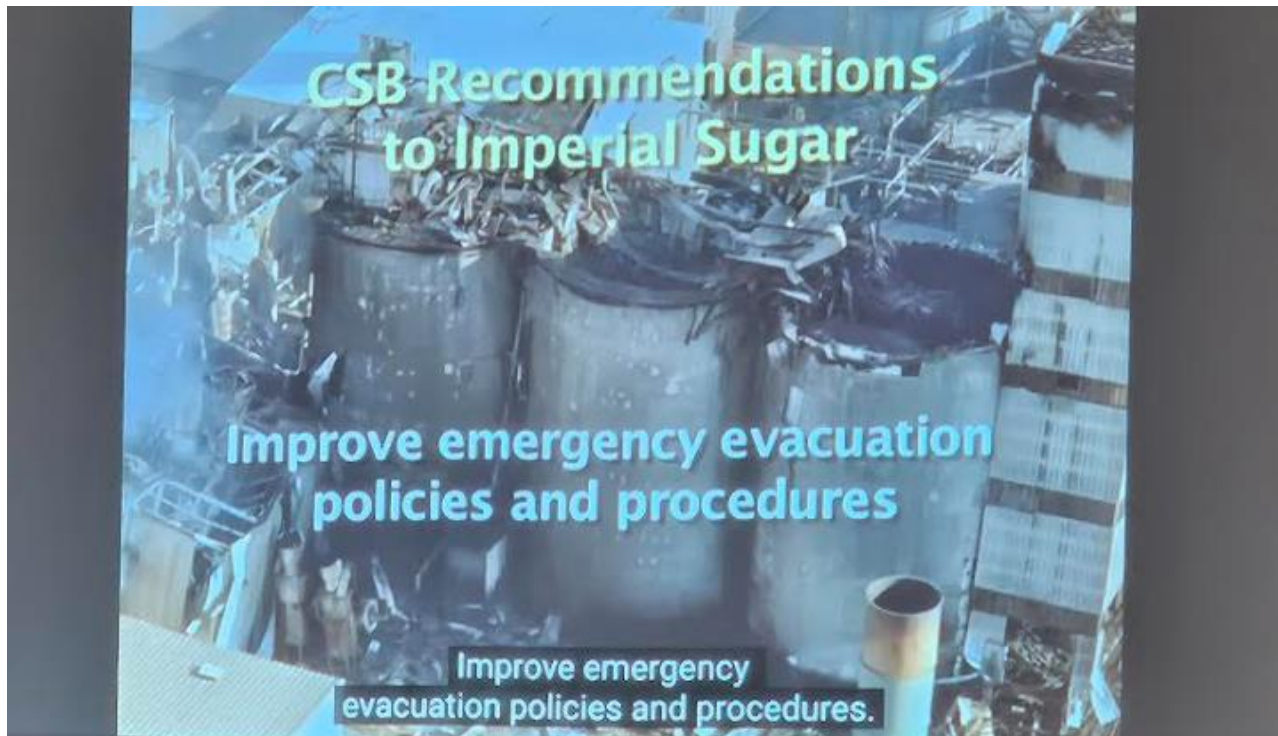
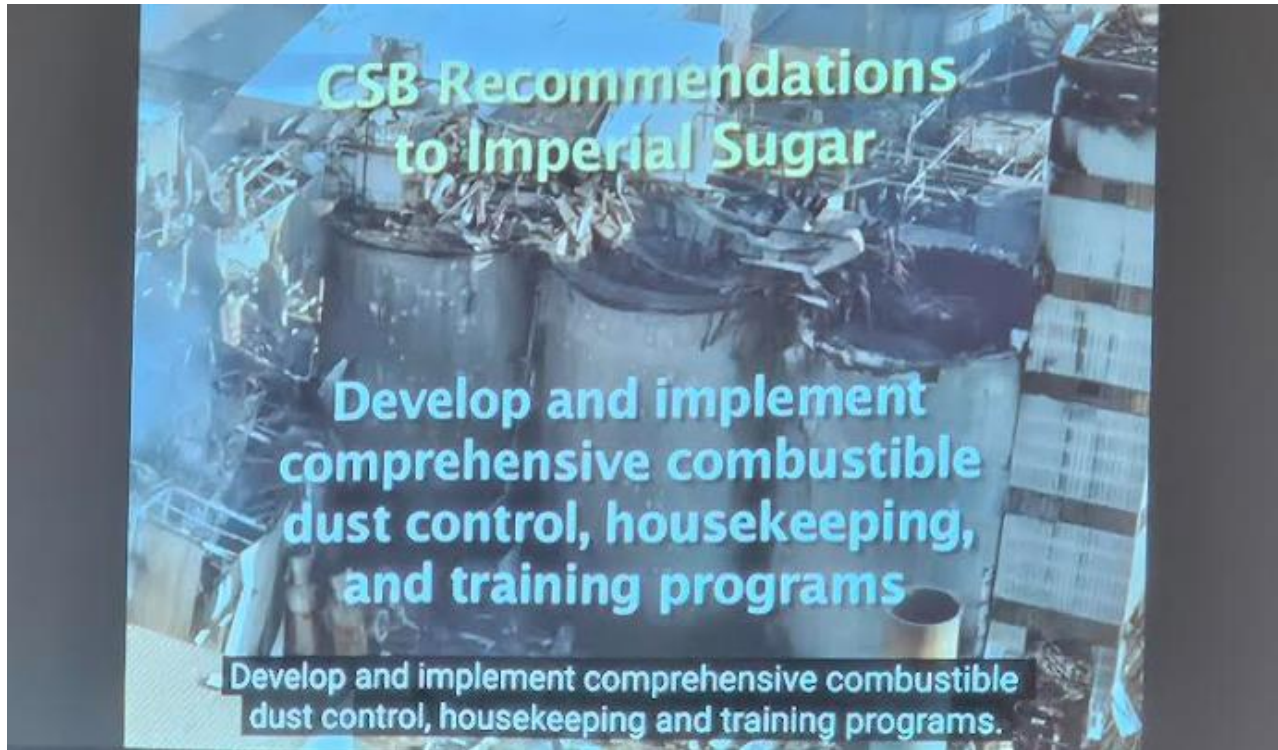


**Imperial Sugar Company dust explosion example for Process Safety Management**





**Imperial Sugar Company dust explosion example for Process Safety Management**

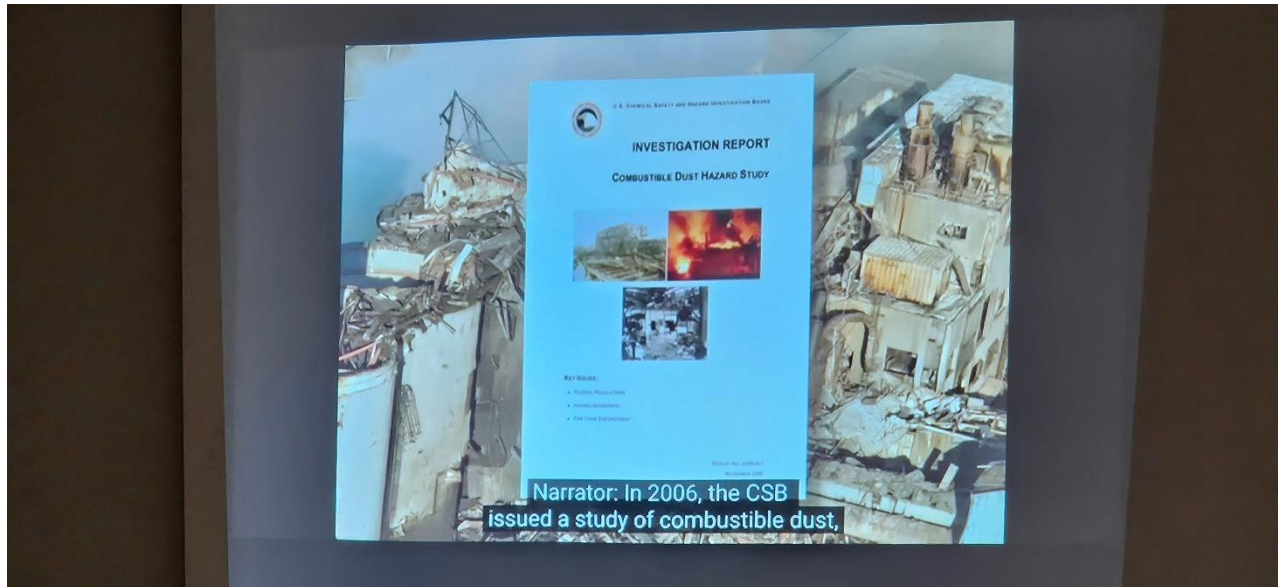


**Imperial Sugar Company dust explosion example for Process Safety Management**

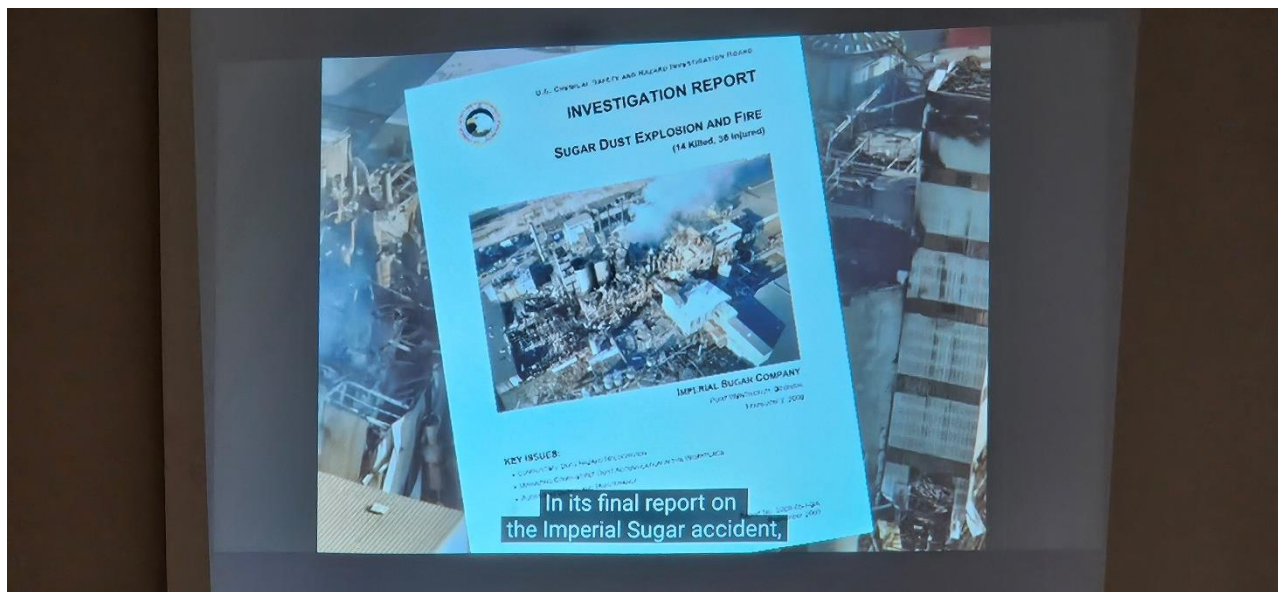




**Imperial Sugar Company dust explosion example for Process Safety Management**

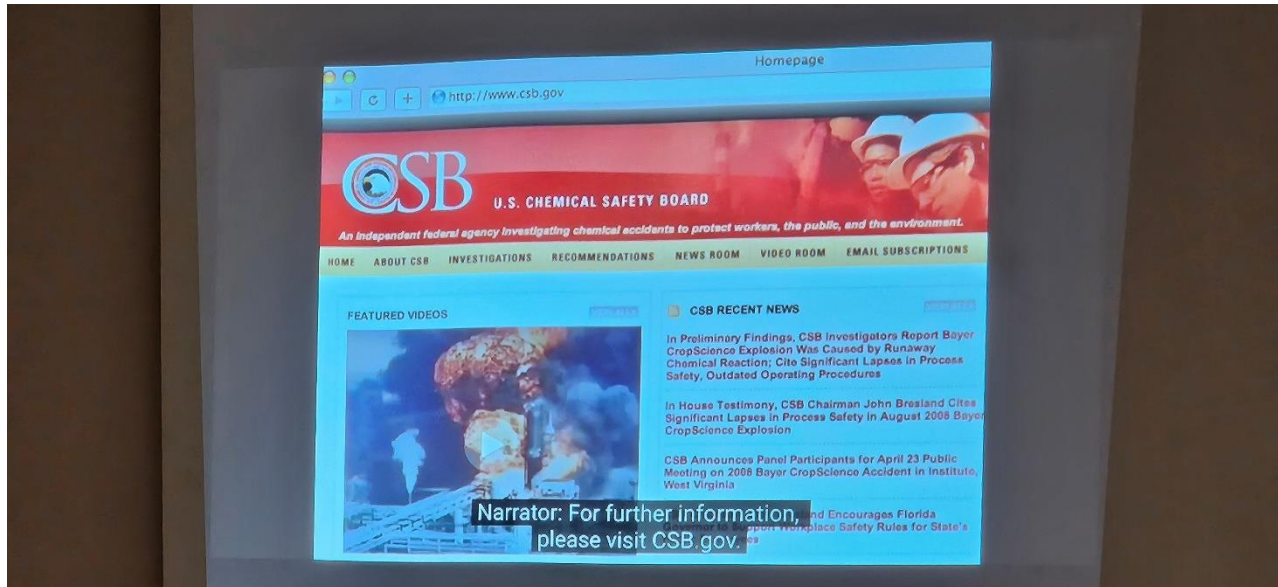


**Chemical Safety Board (CSB) video of Sugar Dust Explosion at Imperial Sugar Company**

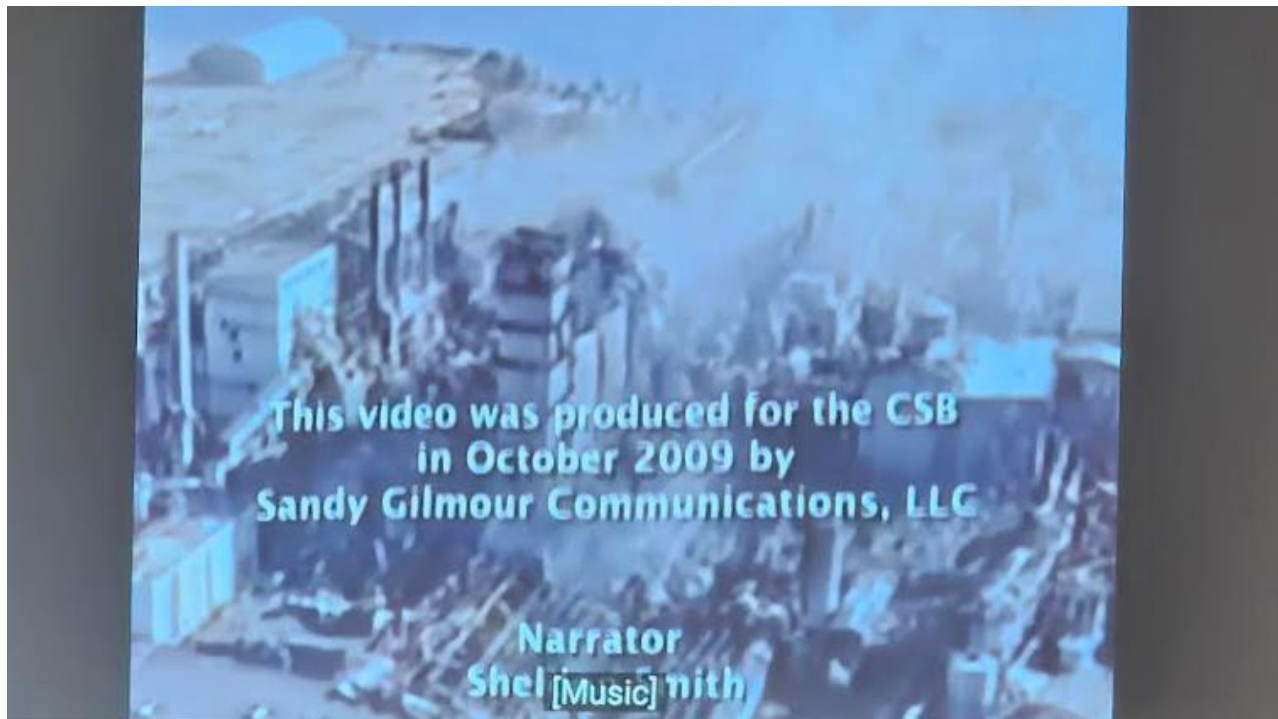


**Imperial Sugar Company dust explosion example for Process Safety Management**

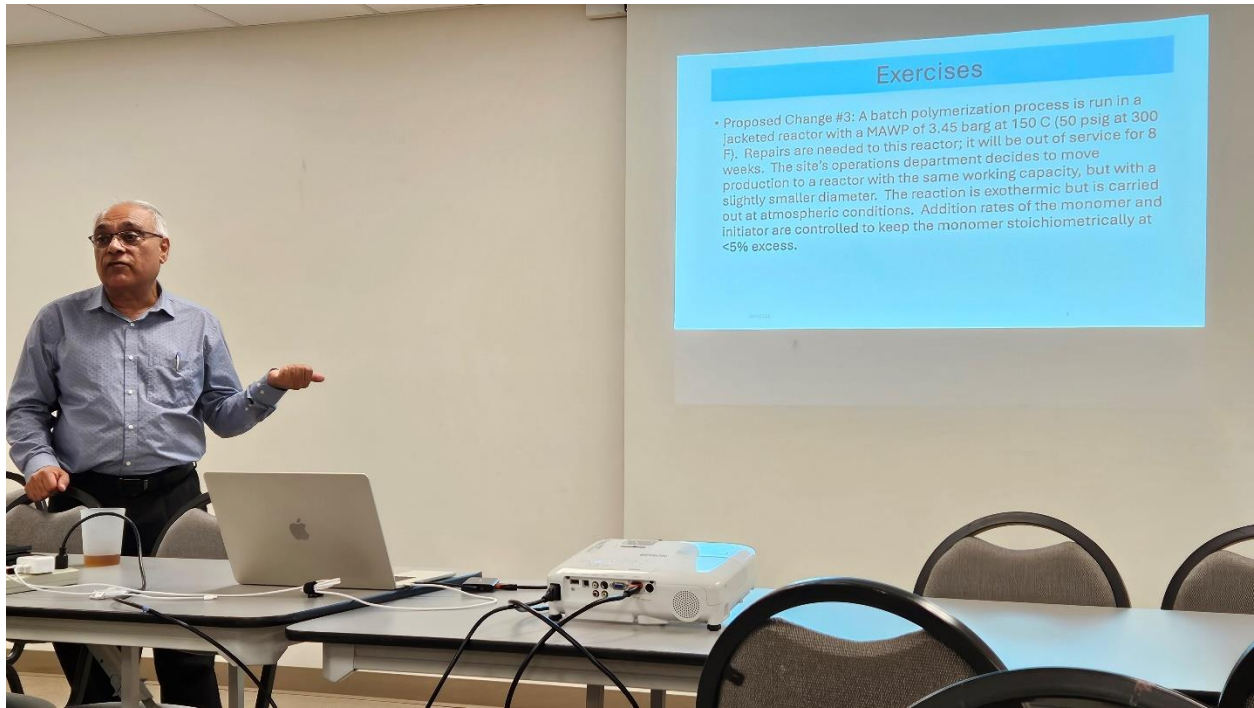




**Chemical Safety Board (CSB) video of Sugar Dust Explosion at Imperial Sugar Company**



**Chemical Safety Board (CSB) video of Sugar Dust Explosion at Imperial Sugar Company**



**MOC – PSM Case Study Workshop Exercises 1 (4 attendees) and Exercise 2 (4 attendees)**

**Details of Examples 1 and 2 are on a separate enclosure.**



**Michael Galgoczy, P.E. presenting CLE AICHe appreciation letter to Gurmukh Bhatia, CPSA**





**Dinner Shrimp Clam Chowder and Chicken Stew with brown rice and bean salad**







**Shrimp Clam Chowder**



**Dessert: Cherry Cheese Danish and  
Caramel Walnut Danish**