

**CMTC-486239-MS**

## **Feasibility of Near-Miscible Flooding By Production Gas Rejection with Varying CO<sub>2</sub> Content in Qinhuangdao Oilfield**

Hao Chen, China University of Petroleum, Beijing; Xiansong Zhang, Baozhen Li, CNOOC; Yuan Mei, He Tang, China University of Petroleum, Beijing, and Shuai Wang, Changqing Oilfield Company, PetroChina, Xifeng, China

Copyright 2017, Carbon Management Technology Conference

This paper was prepared for presentation at the Carbon Management Technology Conference held in Houston, Texas, USA, 17-20 July 2017.

This paper was selected for presentation by a CMTC program committee following review of information contained in an abstract submitted by the author(s). Contents of the paper have not been reviewed and are subject to correction by the author(s). The material does not necessarily reflect any position of the Carbon Management Technology Conference, its officers, or members. Electronic reproduction, distribution, or storage of any part of this paper without the written consent of the Carbon Management Technology Conference is prohibited. Permission to reproduce in print is restricted to an abstract of not more than 300 words; illustrations may not be copied. The abstract must contain conspicuous acknowledgment of CMTC copyright.

---

### **Abstract**

A newly discovered offshore oilfield in QHD 29-2 block is facing the problem of selecting the appropriate developing method. It covers approximately 2300 km<sup>2</sup> and with an average water depth of 27.6m. The depth of the exploration well is over 3600 m with thick sand layer and oil zone. Conventional waterflood cannot be implemented due to the reservoir characteristics of small pores and throats, complex lithology, strong heterogeneity and low water injectivity. Near-miscible flooding is proposed considering the wide range of CO<sub>2</sub> content (24-90 mol%) in the production gas.

Slim tube test and slim tube simulation are conducted successively to determine the minimum miscible pressure (MMP) of the production gas and oil samples from the targeted reservoir. The relationship of displacement efficiency (DE), interfacial tension (IFT) and displacement pressure are provided and chosen as the basis for the division of the pressure interval of near-miscible flooding. The lower limit of the CO<sub>2</sub> content in the production gas to achieve near-miscible flooding are determined for the well 29-2E-5 with the well depth of 3308-3330 m. On this basis, an adjustment measures of adding intermediate components of (C<sub>2</sub>-C<sub>6</sub>) is proposed and assessed. The amount of the adding components is calculated and provided correspondingly.

Boundaries of the pressure region of near-miscible flooding are obtained for different CO<sub>2</sub> contents. Considering the reservoir conditions (112.1 °C, 31.96 MPa), the lower CO<sub>2</sub> content of 64% is estimated to be able to achieve near-miscible flooding for the targeted well. Accordingly, 2.3, 6.5, and 10.3 mol% of (C<sub>2</sub>-C<sub>6</sub>) are determined to be the lowest amounts for the adding components to achieve near-miscible injection for the CO<sub>2</sub> contents of 55%, 40%, and 24%, respectively.

Thus, the evaluation of the feasibility and optimization measures of near-miscible flooding by production gas re-injection with varying CO<sub>2</sub> content in a newly discovered offshore reservoir was conducted. Specific regions in the vicinity of MMP for impure CO<sub>2</sub> near-miscible flooding on the basis of comprehensive analysis of displacement efficiency and IFT from the views of both engineering and

physicochemical were determined. Also, an ideal adjustment measures of adding intermediate hydrocarbons ( $C_2$ - $C_6$ ) were proposed and assessed. Moreover, the tuned compositional model of the paper could be beneficial for providing a further pilot and field case study of production gas re-injection in this reservoir.

## 1. Introduction

Carbon dioxide miscible flooding is a proven oil recovery process, generally one of the most efficient and promising methods for enhancing oil recovery (EOR) methods (Farajzadeh et al., 2010). However, in view of the limitations of gas sources, sedimentary environments and oil characteristics, the application and promotion of miscible flooding is very difficult in China (Chen et al., 2013). Even though some reservoirs are experiencing miscible flooding, maintaining high pressures required for miscible injection is very difficult (Dong et al., 2001). However, laboratory tests and some field tests have fully verified that near-miscible flooding can also obtain very satisfactory recovery (Shyeh-Yung et al, 1991; Schechter et al., 1998; Crigg et al., 1997). Thomas et al. (1994) claims that many successfully miscible flooding would be better described as near-miscible, depending on the evaluation techniques. Theoretically, near-miscible flooding refers to the gas injection of close but not complete miscibility with the oil (Sohrabi et al., 2007). It sounds very attractive from both economic and operational standpoints. For one thing, lower pressure reduces the gas mobility, a certain degree of mobility control effect can be obtained. For another, injection gas volume and compression cost decrease with the pressure decrease (Shyeh-Yung and Stadler, 1995).

The first step in determining whether a field is a good  $CO_2$  flooding candidate is to conduct a screening study to assess the injection performance. The minimum miscibility pressure (MMP) is a key parameter used to distinguish the flooding type, either immiscible or miscible. However, near miscible flooding is much more complicated. Both of the upper and lower boundaries of the near-miscible region in the vicinity of MMP has to be determined. There are several methods to determine MMP or miscibility degree for gas flooding, including both empirical, experimental and numerical simulation studies. Empirical correlations are easy to use and always serve as a tool for quick MMP prediction (Alomair and Iqbal, 2014). However, the accuracy is not very satisfactory because most of the formulas are established based on very limited data within certain reservoir conditions (Teklu et al, 2012). Comparatively, laboratory MMP measurements are more accurate, but time consuming and very expensive. The most widely used experimental method is slim tube test (Yellig and Metcalfe, 1980). Due to the drawbacks of the experimental methods and empirical formulas, computational methods for MMP determination are proposed over the years and are successfully applied to reproduce the MMP between the injected gas and crude oil using computational methods based on the principles of fluid flow and phase equilibrium, which is often modeled based on cubic equation of State (EOS) and flash calculations (Teklu et al, 2012).

It has been recognized that the  $CO_2$  MMP for a reservoir oil depends on the reservoir temperature, oil composition, and the purity of injected  $CO_2$ . MMP increases with increasing reservoir temperature. The effect of oil composition has been observed by several researchers and reached consensus to substantially affect MMP. Pure  $CO_2$  is not always available as an injection gas. Impure  $CO_2$  streams, however, are available from a variety of sources, including natural reservoirs and process plant waste streams. Typically, the  $CO_2$  -rich produced gas streams contain a wide variety of components from methane and nitrogen to intermediate hydrocarbons-such as ethane, propane, butane, and  $H_2S$ . Metcalfe (1982) has shown that the presence of impurities can affect the pressure required to achieve miscible displacement. In general, the presence of  $CH_4$  or  $N_2$  in  $CO_2$  can substantially increase the  $CO_2$  MMP, while the presence of  $H_2S$ ,  $C_2H_6$ , or intermediate hydrocarbons (such as  $C_3$ ,  $C_4$ ) can reduce the  $CO_2$  MMP.

Use of a CO<sub>2</sub> source diluted by impurities can substantially improve the economic prospects of an EOR project. Also, CO<sub>2</sub> flood candidates that cannot become miscible with pure CO<sub>2</sub> may be viable with enriched CO<sub>2</sub> streams. For gravity-stable CO<sub>2</sub> floods, density adjustment while maintaining miscibility can be achieved by diluting the CO<sub>2</sub> stream with selected components. Contamination of CO<sub>2</sub> by C<sub>1</sub> or N<sub>2</sub> has been shown to adversely affect the MMP. Conversely, the addition of C<sub>2</sub>, C<sub>3</sub>, C<sub>4</sub>, or H<sub>2</sub>S to CO<sub>2</sub> has been shown to have the effect of lowering the MMP. Rutherford (1962) empirically found pseudocritical temperature to show a correlation with the MMP required for hydrocarbon miscible floods. Jacobson (1972) applied the same concept with the acid gases of CO<sub>2</sub> and H<sub>2</sub>S. Shang et al (2014) studied the effect of adding CH<sub>4</sub> and N<sub>2</sub> in the injection CO<sub>2</sub> on MMP. It was found that with the increase of the contaminants, MMP increases significantly. Comparatively, the impact of N<sub>2</sub> is more obvious. Hou et al (2013) summarized the main factors of MMP. It was concluded that for a certain gas composition and reservoir temperature, the more the intermediate components (C<sub>2</sub>-C<sub>6</sub>) in the oil and the smaller the relative molecular mass, the smaller the MMP is. On the contrary, the heavier the oil, the more difficult to achieve miscibility. For a certain reservoir, the reservoir temperature and oil composition are mostly stable, thus, the intermediate components (C<sub>2</sub>-C<sub>6</sub>) in the injection gas is one of the key factors influencing the miscibility of oil and gas system. Actually, the detrimental effect of nitrogen and methane can be offset by the beneficial effects of intermediate hydrocarbons. Thus, the produced gas from a CO<sub>2</sub> flood may be miscible with the oil at reservoir conditions even though it contains a high level of impurities.

QHD 29-2 block is an offshore oilfield of China with very thick oil zone, complex lithology, and strong heterogeneity. Conventional waterflood cannot be implemented due to the small pores and throats, and low water injectivity. The discovery of a big natural gas sources with varying CO<sub>2</sub> content just on top of the oil layer, provides big potential for the production gas re-injection to develop the oilfield effectively. Thus, in view of the wide range of CO<sub>2</sub> contents and huge costs of gas separation in an offshore oilfield, near-miscible flooding, is presented for the rational development of the reservoir.

So far, researches focusing on near miscible flooding is still very limited. Firstly, there is no reliable way to determine the pressure interval of near-miscible flooding, especially for impure CO<sub>2</sub> near-miscible flooding. In addition, the effect of contaminants in the injection gas on miscibility degree is still unclear. Thus, in this paper, the well 29-2E-5 with the well depth of 3308-3330 m in QHD offshore oilfield is taken as an example, pressure interval of near-miscible flooding under different CO<sub>2</sub> contents are determined. Also, the lower limit of the CO<sub>2</sub> content to implement near-miscible flooding under reservoir conditions is predicted. For the CO<sub>2</sub> content blow the lower limit, the effect and feasibility of adding intermediate components (C<sub>2</sub>-C<sub>6</sub>) in the injection gas are studied. On this basis, the amount of (C<sub>2</sub>-C<sub>6</sub>) needed for different CO<sub>2</sub> content are forecasted.

## 2. Methodology

Both experimental and simulation studies were conducted. The experimental part includes chromatographic analysis, PVT test, and slim tube test. The simulation part includes phase matching of reservoir fluids, compositional modeling and slim tube simulation.

### 2.1 Materials

Physical properties of the crude oil samples collected from the well 29-2E-5 with the depth of 3308-3330 m and 3475-3500 m, were shown in Table 1. Fig.1 showed the composition comparison of the oil-solvent system for these two layers. Obviously, for the upper layer, the content of light components (C<sub>1</sub>+N<sub>2</sub>) is higher while the content of intermediate components (C<sub>2</sub>-C<sub>6</sub>) is lower, which is more difficult to achieve miscibility with the injection gas. Table 2 is the compositions of the gas samples used in this paper,

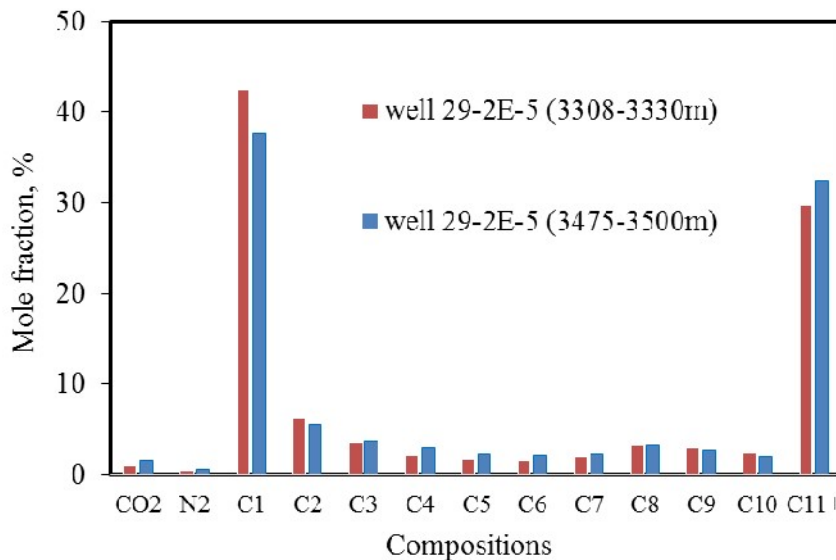
determined by gas chromatography (GC) analysis.

**Table 1 Physical properties of crude oil in well 29-2E-5**

Parameters	well 29-2E-5		Units	
	3308-3330	3475-3500		
Reservoir condition (*)	Pressure	31.96	34.04	MPa
	Temperature	112.1	116.7	°C
Fluid properties	Saturation pressure	17.92	17.49	MPa
	Gas/oil ratio	107.50	84.30	m <sup>3</sup> /m <sup>3</sup>
	Volume coefficient of the oil	1.3360	1.2650	m <sup>3</sup> /m <sup>3</sup>
	Oil density*	0.6986	0.7354	g/cm <sup>3</sup>
	Oil viscosity*	0.29	1.39	mPa.s
	Died oil density	0.8391	0.8502	g/cm <sup>3</sup>
Composition of Well-flow content	C <sub>1</sub> +N <sub>2</sub>	42.92	38.40	%
	CO <sub>2</sub> +C <sub>2</sub> ~C <sub>10</sub>	27.33	29.11	%
	C <sub>11</sub> <sup>+</sup>	29.75	32.49	%

**Table 2 compositions of the injection gases in the test**

Component	CO <sub>2</sub>	N <sub>2</sub>	C <sub>1</sub>	C <sub>2</sub>	C <sub>3</sub>	iC <sub>4</sub>	nC <sub>4</sub>	iC <sub>5</sub>	nC <sub>5</sub>	C <sub>6</sub>
	100	0.00	0.00	0.00	0.00	0.00	0.00	0.00	0.00	0.00
Fraction, %	85	0.16	13.67	0.72	0.27	0.04	0.08	0.02	0.02	0.03
	70	0.33	27.35	1.44	0.53	0.08	0.15	0.04	0.04	0.05
	55	0.49	41.02	2.16	0.80	0.12	0.23	0.05	0.06	0.08
	40	0.65	54.69	2.87	1.07	0.16	0.31	0.07	0.08	0.11



**Fig.1 Composition of oil-solvent system (well 29-2E-5)**

## 2.2 Slim tube test

RUSKA-2730 high pressure high temperature visual PVT apparatus produced by Ruska Company (Houston, Texas, USA) and CFS-200 CO<sub>2</sub> core flooding system produced by Corelab Company (Houston, Texas, USA) were used together to recombine the live oil and conduct the slim tube test, respectively. Experiments were conducted according to the measurement method for MMP by slim tube test (SY/T

6573-2016) of oil and gas industry standard of People's Republic of China. Physical parameters of the slim tube was shown in Table 3. More details of the experiments can be found in previous publications (Chen et al., 2017).

Table 3 Physical parameters of the slim tube

Parameter	Length, m	Diameter, mm	Porosity, %	Pore volume, cm <sup>3</sup>	Gas permeability, 10 <sup>-3</sup> um <sup>2</sup>
Value	12.51	4.58	37.17	76.60	5275

### 2.3 slim tube simulation

PVTi of the Eclipse 300 was used to construct the compositional model by component lumping technique and tuning Peng-Robinson Equation of State (PREOS) based on the experimental data. More parameters such as displacement efficiency, IFT, GOR, viscosity and density of both liquid and gas phases, can be obtained.

## 3. Results and discussion

Based on the oil samples collected from the upper and lower depths of the well 29-2E-5, MMP and MNMP under different CO<sub>2</sub> contents were obtained from both slim tube test and slim tube simulation. On this basis, the effect of impurities of the injection gas on the miscibility was discussed. Moreover, the feasibility of adding intermediate components (C<sub>2</sub>-C<sub>6</sub>) to enhance the miscibility degree was studied.

### 3.1 Determination of pressure interval of near-miscible flooding

IFT and displacement efficiency are two parameters for the determination of MMP from physicochemical and engineering point of views, respectively. Different from miscible flooding, a pressure interval with two endpoints, instead of a single point, is needed for determining near-miscible flooding. Fig.2 is the relationship of IFT, displacement efficiency and injection pressure for the oil sample from the well 29-2E-2 (3308-3330 m) with pure CO<sub>2</sub>. Obviously, with the pressure increase, IFT of oil and gas system decrease sharply and then slows down. While the displacement efficiency increase linearly first then slows down and finally leveled off. Thus, it is not easy to distinguish a region from the smooth curves.

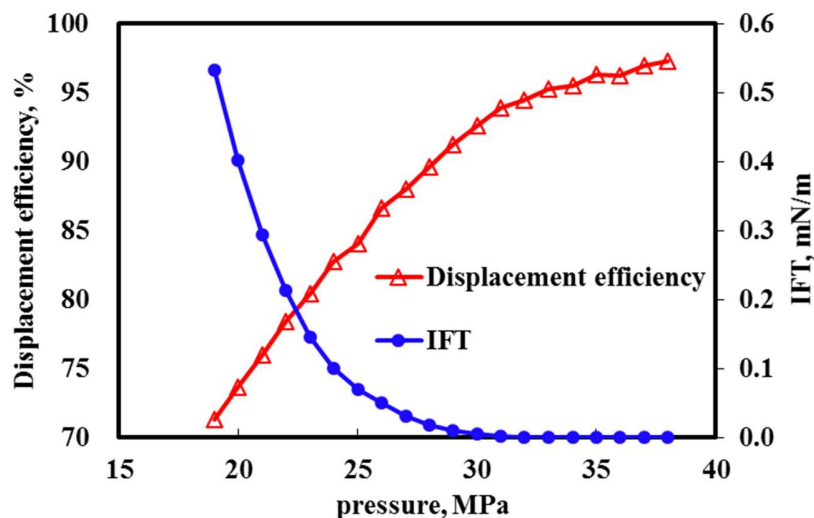


Fig.2 IFT, displacement efficiency and injection pressure (100% CO<sub>2</sub>)

In this paper, the IFT data obtained from the slim tube simulation was transformed to semilog coordinate with the pressure. A much more obvious breakpoint can be identified, which is regarded as the lower boundary of the pressure region of near-miscible flooding. From the engineering point of view, 0.001 mN/m is generally chosen as the ultra-low IFT which can be used as the sign of complete miscibility. Thus, a pressure region of near-miscible flooding can be determined. Similarly, the upper and lower boundaries can also be obtained according to the relationship of displacement efficiency and pressure. More test points are needed to represent the trend of the curve clearly. As is shown in Fig.3, in the vicinity of MMP determined by conventional slim tube test, a new region can be distinguished which is significantly different from the immiscible region and miscible region. Thus, pressure interval of near-miscible flooding can be determined and compared by both IFT and displacement efficiency. And what we find is, statistically, the displacement efficiency and IFT of this transition interval are about 88%-96% and 0.001-0.05 mN/m, respectively.

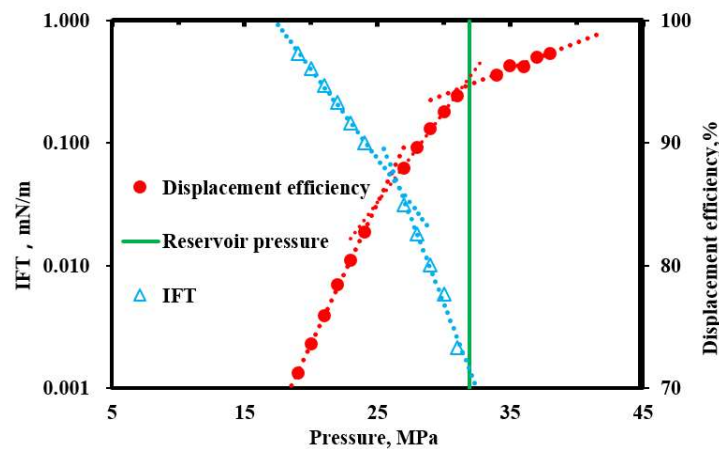


Fig.3 Displacement efficiency and IFT VS pressure (100% CO<sub>2</sub>)

Slim tube tests with more test points under three different CO<sub>2</sub> contents (100%, 80%, and 55%) were conducted for oil samples from the well depth of 3308-3330 m of the well 29-2E-5. On this basis, slim tube simulation under 5 different CO<sub>2</sub> contents (100%, 85%, 70%, 55%, 40%) were conducted using the software Eclipse based on the compositional model matched with the data of PVT tests. Similarly, the upper and lower boundaries of the pressure region were calculated for different CO<sub>2</sub> contents. Three regions includes immiscible flooding, near-miscible flooding, and miscible flooding, were divided by these two boundaries. Table 4 is the summary of the MMP and MNMP determined by slim tube test and slim tube simulation. Obviously, the simulation results obtained by displacement efficiency and IFT are very close. Thus, the average values were taken as the MMP or MNMP. Compared with the slim tube results, the relative error is all less than 8%.

Table 4 Summary of the determined MMP and MNMP of the well 29-2E-5 (3308-3330 m)

CO <sub>2</sub> content, mol%	MNMP, MPa			MMP, MPa				
	simulation		test	simulation			test	
	E <sub>D</sub>	IFT	AVE.	E <sub>D</sub>	IFT	AVE.		
100	26.85	26.18	26.52	27.26	33.21	32.53	32.90	30.49
85	28.47	29.46	28.97	---	35.43	35.22	35.19	---
70	31.80	30.79	31.30	---	36.87	37.10	37.09	---
55	33.38	33.68	33.53	34.14	41.08	39.09	40.11	38.56
40	34.95	35.01	34.98	---	42.72	41.51	42.52	---

Note: E<sub>D</sub>: Results obtained by displacement efficiency; IFT: Results obtained by IFT;

### 3.2 The effect of mixing gas on miscibility

Fig.4 is the relationship of the forecasted average upper and lower boundaries of near-miscible flooding and the CO<sub>2</sub> content for the well 29-2E-5. Considering the mixing gases of the injection gas, CH<sub>4</sub> is the main components. Thus, with the decrease of CO<sub>2</sub> content, the miscibility becomes more and more difficult. Both MMP and MNMP increase greatly. It is found that the trends basically obey liner relationship. Specifically, for the oil samples of the well 29-2E-5, for each 10% of impurities increase in the injection gas, MMP and MNMP increase 1.6 MPa and 1.4 MPa, respectively. It can also be concluded that with the decrease of CO<sub>2</sub> content, the potential scope, which belongs to near-miscible flooding, enlarges. In addition, compared with the reservoir pressure of 31.96 MPa, CO<sub>2</sub> content below 64% cannot achieve near-miscible flooding for the well depth of 3308-3330 m of the well 29-2E-5. Thus, for the production gases of the reservoir, the lower limit of the CO<sub>2</sub> content can be re-injected to implement near-miscible flooding is 64%.

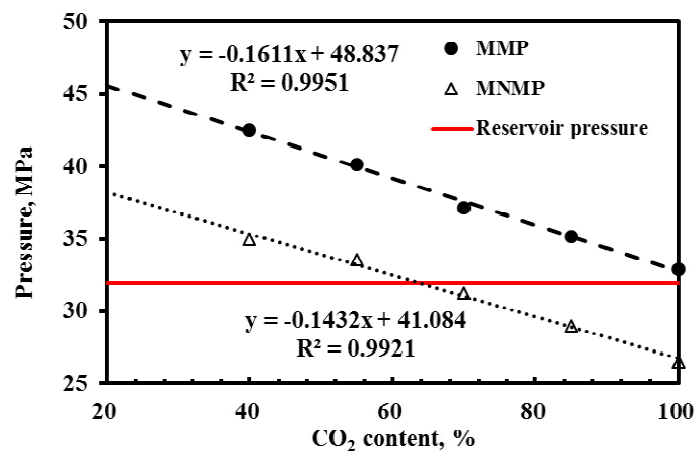


Fig.4 MNMP and MMP VS CO<sub>2</sub> content

### 3.3 Miscibility control by adding intermediate components

Generally, the mixing of N<sub>2</sub>, O<sub>2</sub>, and CH<sub>4</sub> can increase the difficulty of miscibility, while the mixing of H<sub>2</sub>S, SO<sub>2</sub>, and intermediate hydrocarbons (C<sub>2</sub>-C<sub>6</sub>) are beneficial for the miscibility. For near-miscible flooding, the whole process is the dual function of combined condensing/vaporizing mechanism. Taken the oil samples from the well depth of 3308-3330 m of the well 29-2E-5 as an example, the feasibility of adding a certain amount of intermediate components (C<sub>2</sub>-C<sub>6</sub>) in the injection gas to lower the pressure interval of near-miscibility was studied. This will definitely be helpful for implementing and enlarging the potential of near-miscible flooding in QHD offshore oilfield.

Firstly, for a certain CO<sub>2</sub> content, different contents of intermediate hydrocarbons (C<sub>2</sub>-C<sub>6</sub>) were added to three groups of gas samples (55%, 40%, and 24% CO<sub>2</sub>) to test the effect on the lower and upper boundaries of pressure interval. Obviously, the adding of 5 mol% (C<sub>2</sub>-C<sub>6</sub>) greatly reduce the MMP and MNMP of the targeted oil samples, the reducing ranges are 8% and 11%, respectively. As is shown in Fig.5, the corresponding CO<sub>2</sub> content for the pressure range of near-miscible flooding expands to (34.5%-76.6%). The lower limit of CO<sub>2</sub> content decreased by nearly 30%, which effectively enlarge the CO<sub>2</sub> content limit for implementing near-miscible flooding. Two of the three gas samples can achieve near-miscible flooding due to the adding of 5 mol% intermediate hydrocarbons. It should also be noted that with the adding of light components, the appropriate range of CO<sub>2</sub> contents for implementing near-miscible flooding also expands, nearly 1/3 for the targeted well depth.

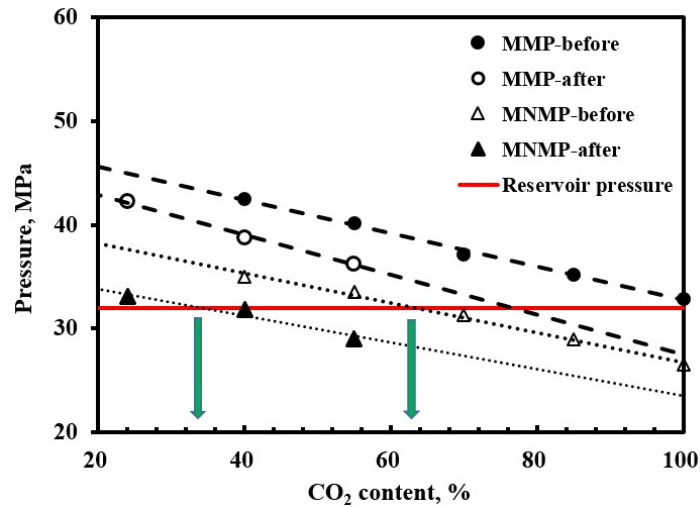


Fig.5 the effect of 5% (C<sub>2</sub>-C<sub>6</sub>) on MNMP

It is well known that the adding of intermediate components can effectively reduce the MNMP and MMP, and enlarge the range of near-miscible flooding. However, the amount of light components needed to add for achieving near-miscible flooding for different CO<sub>2</sub> contents was still unclear. Thus, different contents (1%, 3%, 5%, 8%, 10%, and 15%) of intermediate components were added to the injection gases with the CO<sub>2</sub> contents of 55%, 48%, 40%, 32% and 24%. The relationship of the amount of (C<sub>2</sub>-C<sub>6</sub>) needed for each CO<sub>2</sub> content are obtained, as is shown in Fig.6. It can be concluded that for each 10% contaminants content increase in the well depth of 3308-3330 m in well 29-2E-5, about 2.6% intermediate hydrocarbons (C<sub>2</sub>-C<sub>6</sub>) is needed to keep near-miscible flooding.

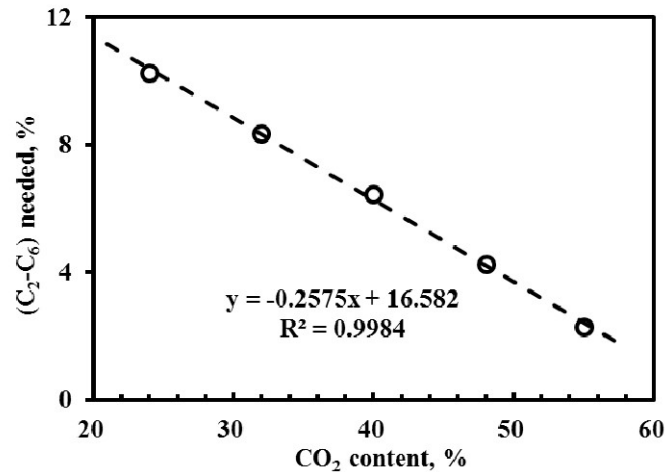


Fig.6 CO<sub>2</sub> content VS intermediate components (C<sub>2</sub>-C<sub>6</sub>) needed to achieve near-miscible flooding

From Fig.6, it can be concluded that for the CO<sub>2</sub> content of 55%, 40%, and 24%, about 2.29%, 6.46% and 10.28% of the intermediate components (C<sub>2</sub>-C<sub>6</sub>) are needed for achieving near-miscible flooding in the well QHD 29-2E-5 with the depth of 3308-3330 m, as is shown in Table 5.

Table 5 The amount of (C<sub>2</sub>-C<sub>6</sub>) needed for different CO<sub>2</sub> contents

CO <sub>2</sub> , mol%	55	48	40	32	24
(C <sub>2</sub> -C <sub>6</sub> ) needed, mol %	2.29	4.26	6.46	8.38	10.28



## 4. Conclusions

- (1) Based on the data obtained from slim tube test and slim tube simulation with denser test points, pressure regions of near-miscible flooding with different CO<sub>2</sub> content were determined for the well depths of 3308-3330 m of the well 29-2E-5.
- (2) For the reservoir conditions, the lower limit of CO<sub>2</sub> content for achieving near-miscible flooding in well depth of 3308-3330 m of the well 29-2E-5 is 64%.
- (3) The mixing of the contaminants (mainly methane) can greatly enhance the difficulty to achieve miscibility. For the targeted layer of the well 29-2E-5, for each 10% increase of contaminant contents, MNMP and MMP increase 1.4 MPa and 1.6 MPa, respectively.
- (4) By adding 5 mol% light components of (C<sub>2</sub>-C<sub>6</sub>), the lower limit of CO<sub>2</sub> content for achieving near-miscible flooding can be decreased effectively. The corresponding CO<sub>2</sub> content range for near-miscible flooding can be decreased to (34.5-76.6%) with 1/3 interval enlarge.
- (5) The (C<sub>2</sub>-C<sub>6</sub>) contents needed for achieving near-miscible flooding in the upper layer of the well QHD 29-2E-5 under different CO<sub>2</sub> contents was obtained. For each 10% decrease of CO<sub>2</sub> content, 2.6% of the intermediate components is needed.

## Acknowledgments

This study was supported by Beijing Natural Science Foundation (Grant 3173044), Science Foundation of China University of Petroleum, Beijing (No. 2462013YXBS003), Open Foundation of State Key Laboratory of Offshore Oil Exploitation (2015-YXKJ-001).

## References

1. Alomair, O., Iqbal, M., 2014. CO<sub>2</sub> Minimum miscible pressure (MMP) estimation using multiple linear regression (MLR) technique. In: Proceedings of SPE Saudi Arabia Section Technical Symposium and Exhibition. Al-Khobar, Saudi Arabia, 21-24 April.
2. Chen H., Yang, S., Ren, S., Yu, D. H., Lu, H., Li, F., & Zhang, X., 2013. Crude oil displacement efficiency of produced gas re-injection. *International Journal of Green Energy*. 10 (6): 566-573.
3. Chen, H., Zhang, X., Chen Y., Tang, H., Mei Y., Li, B., and Shen, X., 2017. Study on pressure interval of near-miscible flooding by production gas Re-injection in QHD offshore oilfield, *Journal of Petroleum Science and Engineering*, <https://doi.org/10.1016/j.petrol.2017.07.045>.
4. Dong, M., Huang, S., Srivastava, R., 2000. Effect of solution gas in oil on CO<sub>2</sub> minimum miscibility pressure. *Journal of Canadian Petroleum Technology*. 39(11), 53-61.
5. Farajzadeh, R., Andrianov, A., & Zitha, P. L., 2010. Investigation of Immiscible and Miscible Foam for Enhancing Oil Recovery. *Industrial & Engineering Chemistry Research*, 49(4), 1910-1919.
6. Grigg, R.B. and Schechter, D.S., 1997. State of the industry in CO<sub>2</sub> floods; In: Proceedings of the SPE Annual Technical Conference and Exhibition, San Antonio, TX, October 5-8.
7. Hou, D., Luo P., Sun, L., Tang, Y., Sun, Y., and Pan, Y., 2013. An improved model for predicting minimum miscibility pressure of hydrocarbon gas crude oil system. *Xinjiang Petroleum Geology*. 34 (6): 684-688.
8. Jacobson H A. Acid Gases and Their Contribution to Miscibility. *Journal of Canadian Petroleum Technology*, 1972, 11(2):56-59.
9. Metcalfe R S. Effects of Impurities on Minimum Miscibility Pressures and Minimum Enrichment Levels for CO<sub>2</sub> and Rich-Gas Displacements. *Society of Petroleum Engineers Journal*, 1982, 22(2): 219-225.
10. Rutherford W M. Miscibility Relationships in the Displacement of Oil By Light Hydrocarbons[J]. *Society of Petroleum Engineers Journal*, 1962, 2(04): 340-346.
11. Schechter, D.S., Grigg, R., and Guo, B., 1998. Wellman unit CO<sub>2</sub> flood: reservoir pressure reduction and flooding the water/oil transition zone. In: Proceedings of SPE Annual Technical Conference and Exhibition. New Orleans, LA,

September 27-30.

12. Shakiba, M., Ayatollahi, S., & Riazi, M., 2016. Investigation of oil recovery and CO<sub>2</sub> storage during secondary and tertiary injection of carbonated water in an Iranian carbonate oil reservoir. *Journal of Petroleum Science and Engineering*, 137: 134-143.
13. Shang, B., Liao, X., Zhao, X., Cai, Z., Li, J., He, Y., and Su, X., 2014. Research about the influence of impurities on MMP and crude oil properties for CO<sub>2</sub> flooding. *Petroleum Geology and Recovery Efficiency*, 21(6):92-94.
14. Shyeh-Yung, J.J., 1991. Mechanisms of miscible oil recovery: effects of pressure on miscible and near-miscible displacements of oil by carbon dioxide. In: *Proceedings of SPE Annual Technical Conference and Exhibition*. Dallas, Texas. October 6-9.
15. Shyeh-Yung, J.J., Stadler, M.P., 1995. Effect of injectant composition and pressure on displacement of oil by enriched hydrocarbon gases. *SPE Reservoir Engineering*, 10(2): 109-115.
16. Sohrabi, M., Danesh, A., Tehrani, D. H., Jamiolahmady, M., 2007. Microscopic mechanisms of oil recovery by near-miscible gas injection. *Transport in Porous Media*, 72(3), 351-367.
17. Thomas, F.B, Holowach, N., Zhou, X., Bennion, D.B., Benion, D.W., 1994. Miscible or near-miscible gas injection, which is better? In: *Proceedings of SPE/DOE Symposium on Improved Oil Recovery*. Tulsa, April 17–20.
18. Teklu, T. W., Ghedan, S. G., Graves, R. M., & Yin, X., 2012. Minimum Miscibility Pressure Determination: Modified Multiple Mixing Cell Method. In: *Proceedings of SPE EOR Conference at Oil and Gas West Asia*, Muscat, Oman, April 16-18.
19. Yellig, W.F., Metcalf, R.S., 1980. Determination and prediction of CO<sub>2</sub> minimum miscibility pressures. *J. Pet. Tech.* 32(1):160-168.